



CIRCUIT-BREAKER, SIZE S2,  
FOR MOTOR PROTECTION, CLASS 10,  
WITH OVERLOAD RELAY FUNCTION A REL. 20A,  
N REL. 260A, SCREW CONNECTION,  
STANDARD BREAKING CAPACITY

General technical data:		
product brand name		SIRIUS
product designation		circuit breaker
Size of the circuit-breaker		S2
Number of poles / for main current circuit		3
Product function		
<ul style="list-style-type: none"> <li>removable terminal for auxiliary and control circuit</li> </ul>		No
<ul style="list-style-type: none"> <li>overload protection</li> </ul>		Yes
<ul style="list-style-type: none"> <li>phase disturbance recognition</li> </ul>		Yes
<ul style="list-style-type: none"> <li>short-circuit to earth recognition</li> </ul>		No
Product component		
<ul style="list-style-type: none"> <li>auxiliary switch</li> </ul>		No
<ul style="list-style-type: none"> <li>undervoltage release mechanism</li> </ul>		No
<ul style="list-style-type: none"> <li>trip indicator</li> </ul>		No
Product extension		
<ul style="list-style-type: none"> <li>auxiliary switch</li> </ul>		Yes
<ul style="list-style-type: none"> <li>optional / motor drive</li> </ul>		Yes
Impulse voltage resistance / rated value	V	6,000
Protection class IP / on the front		IP20
Protection against electrical shock		finger-safe

<b>Installation altitude / at a height over sea level / maximum</b>	m	2,000
<b>Resistance against shock</b>		25g / 11 ms
<b>Ambient temperature</b>		
• during transport	°C	-50 ... +80
• during storage	°C	-50 ... +80
• during operating	°C	-20 ... +70
<b>Active power loss / total / typical</b>	W	12

#### Main circuit:

<b>Operating voltage / rated value</b>	V	690
<b>type of voltage</b>		AC/DC
<b>Service power / at AC-3 / at 400 V / rated value</b>	kW	7.5
<b>Operational current / at AC-3 / at 400 V / rated value</b>	A	20
<b>Mechanical operating cycles as operating time / of the main contacts / typical</b>		50,000
<b>Frequency of operation / at AC-3 / according to IEC 60947-6-2</b>	1/h	15

#### Auxiliary circuit:

<b>Number of change-over switches / for auxiliary contacts</b>		0
--	--	---

#### Protection function:

<b>Trip class</b>		CLASS 10
<b>Adjustable response current / of the current-dependent overload release</b>	A	14 ... 20
<b>Breaking capacity limit short-circuit current (I<sub>cu</sub>)</b>		
• at 400 V / rated value	kA	50
• at 500 V / rated value	kA	12
• at 690 V / rated value	kA	5

#### Installation/mounting/dimensions:

<b>Type of mounting</b>		screw and snap-on mounting onto 35 mm standard mounting rail according to DIN EN 50022
<b>mounting position</b>		any
<b>Depth</b>	mm	149
<b>Height</b>	mm	140
<b>Width</b>	mm	55

#### Connections:

<b>Arrangement of electrical connectors / for main current circuit</b>		front side
<b>Design of the electrical connection</b>		
• for main current circuit		screw-type terminals with box terminals
• for auxiliary and control current circuit		screw-type terminals
<b>Type of the connectable conductor cross-section</b>		

- for main contacts
  - solid
  - finely stranded
    - with conductor end processing
  - stranded
- for AWG conductors / for main contacts

2x (0.75 ... 16 mm<sup>2</sup>)

2x (0.75 ... 16 mm<sup>2</sup>), 0.75 ... 25 mm<sup>2</sup>

2x (0.75 ... 25 mm<sup>2</sup>), 0.75 ... 35 mm<sup>2</sup>

2x (18 ... 2), 1x (18 ... 2)

### Certificates/approvals:

#### General Product Approval

For use in hazardous locations

#### Test Certificates



CSA



GOST



KETI



UL



ATEX

[Special Test Certificate](#)

#### Shipping Approval



ABS



LRS



RMRS

#### other

[Confirmation](#)

[Declaration of Conformity](#)

[other](#)

[Environmental Confirmations](#)

### Further information:

#### Information- and Downloadcenter (Catalogs, Brochures,...)

<http://www.siemens.com/industrial-controls/catalogs>

#### Industry Mall (Online ordering system)

<http://www.siemens.com/industrial-controls/mall>

#### Cax online generator:

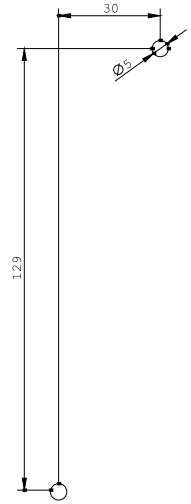
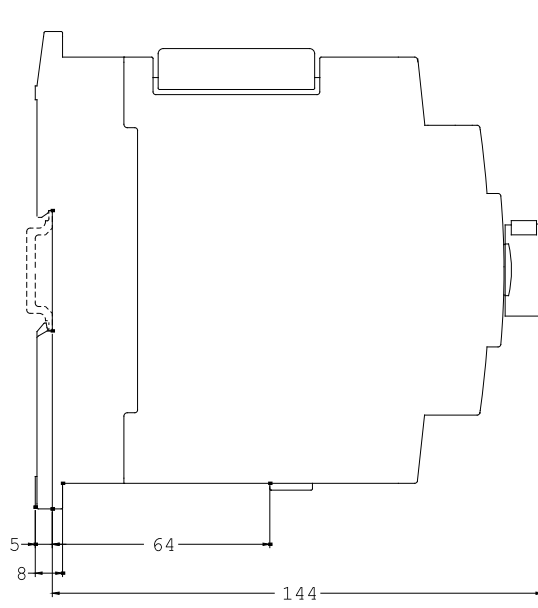
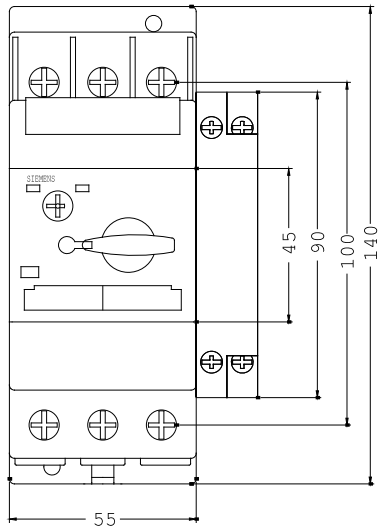
<http://www.siemens.com/cax>

#### Service&Support (Manuals, Certificates, Characteristics, FAQs,...)

<http://support.automation.siemens.com/WW/view/en/3RV1131-4BA10/all>

#### Image database (product images, 2D dimension drawings, 3D models, device circuit diagrams, ...)

[http://www.automation.siemens.com/bilddb/cax\\_en.aspx?mlfb=3RV1131-4BA10](http://www.automation.siemens.com/bilddb/cax_en.aspx?mlfb=3RV1131-4BA10)



last change:

Feb 11, 2013