



26X26MM PLASTIC SQUARE ACTUATOR: ILLUMINATED PUSHBUTTON LATCHING, UNLOCKING BY PRESSING AGAIN WITH FLAT BUTTON ILLUMINABLE INCL. HOLDER FOR 3 ELEMENTS WITH HOLDER BLUE

**Actuato/ signaling device:**

<b>Design of the product</b>	Single device square
<b>Design of the operating mechanism</b>	Illuminated pushbutton
<b>Functionality / of the actuator</b>	Latching
<b>Type of unlocking device</b>	push-to-unlatch mechanism
<b>Color / of the activation element</b>	Blue
<b>Material / of the activation element</b>	plastic
<b>Shape / of the activation element</b>	Flat pushbutton
<b>Number of switching positions</b>	2
<b>Product component / front ring</b>	Yes
<b>Material / of the front ring</b>	plastic
<b>Color / of the front ring</b>	black
<b>Design of the front ring</b>	Standard
<b>Product function / EMERGENCY STOP function</b>	No

**Holder:**

<b>Material / of the holder</b>	Plastic
---------------------------------	---------

**General technical details:**

<b>Resistance against shock</b>	
---------------------------------	--

<ul style="list-style-type: none"> <li>for devices with incandescent lamp / according to IEC 60068-2-27</li> <li>for devices without incandescent lamp / according to IEC 60068-2-27</li> </ul>		<p>&lt;= 30g</p> <p>&lt;= 50g</p>
<b>Resistance against vibration / according to IEC 60068-2-6</b>		20 ... 200 Hz: 5g
<b>Operating cycles / maximum</b>	1/h	1,000
<b>Mechanical operating cycles as operating time / typical</b>		300,000
<b>Reference code</b>		
<ul style="list-style-type: none"> <li>according to DIN EN 61346-2</li> <li>according to DIN 40719 extended according to IEC 204-2 / according to IEC 750</li> </ul>		<p>S</p> <p>S</p>
<b>Tightening torque / of the screws in the bracket / maximum</b>	N·m	1
<b>Ambient temperature</b>		
<ul style="list-style-type: none"> <li>during operating</li> <li>during storage</li> </ul>	<p>°C</p> <p>°C</p>	<p>-25 ... +70</p> <p>-40 ... +80</p>
<b>Protection class IP</b>		IP66
<b>climatic class / during the operating phase / according to EN 60721</b>		3K6
<b>Mounting type</b>		front mounting
<b>Shape / of the installation hole</b>		square
<b>Installation width</b>	mm	30
<b>Mounting height</b>	mm	5
<b>Mounting depth</b>	mm	29

#### Certificates/ approvals:

##### General Product Approval



[Special Test Certificate](#)

##### Declaration of Conformity

##### Test Certificates

#### Shipping Approval



#### other

[Confirmation](#)

[other](#)

[Environmental Confirmations](#)

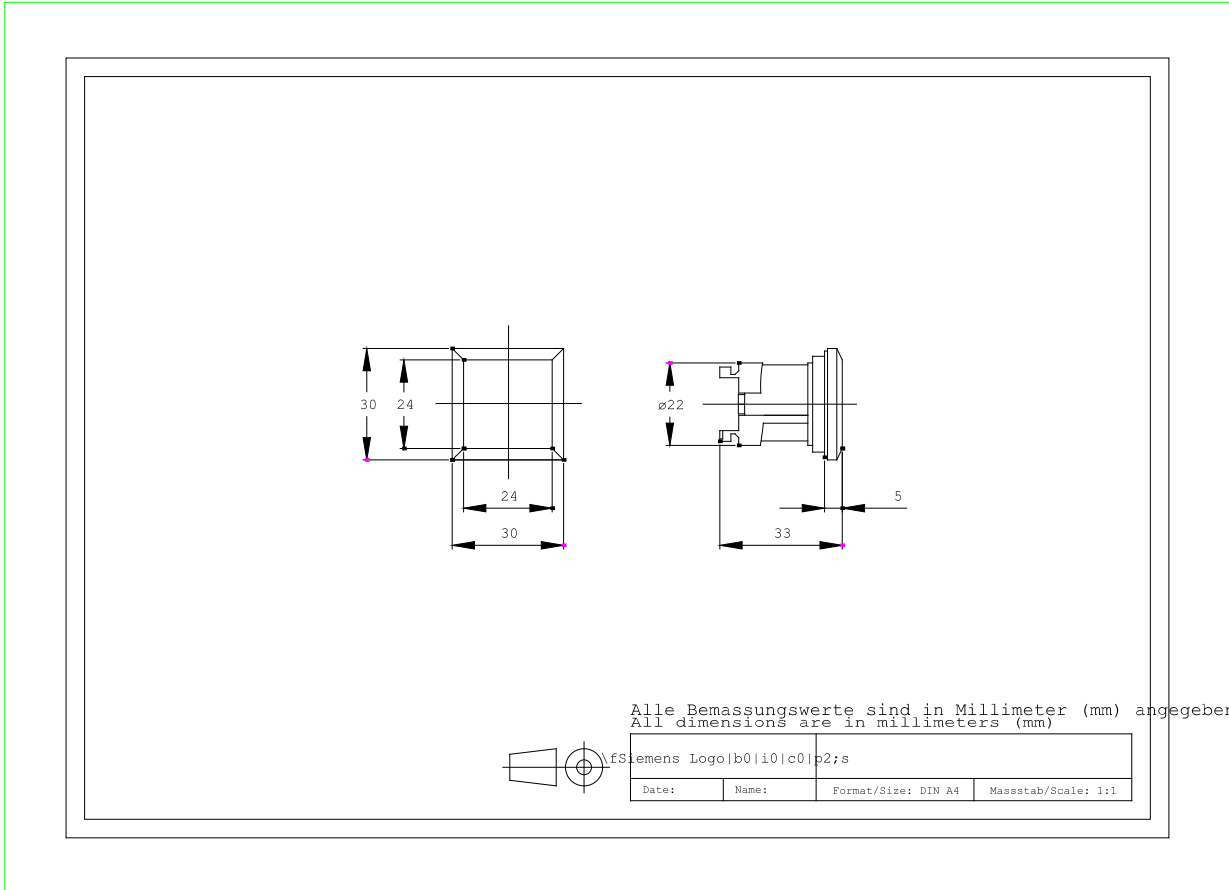
#### Further information:

##### Information- and Downloadcenter (Catalogs, Brochures,...)

<http://www.siemens.com/industrial-controls/catalogs>

##### Industry Mall (Online ordering system)

<http://www.siemens.com/industrial-controls/mall>



last change:

Aug 4, 2014