



ACTUATOR-/INDICATOR COMPONENT CONTACT BLOCK WITH 1 CONTACT ELEMENT SOLDER PIN TERMINAL, 1NC

Contact block/ lampholder:

Product designation		contact block
Number of NC contacts / for auxiliary contacts		1
Number of NO contacts / for auxiliary contacts		0
Number of changeover contacts / for auxiliary contacts		0
Product function / positive opening		Yes
Number of lampholders		0
Design of the electrical connection		solder pin connectors




General technical data:

Degree of pollution		class 3
Design of the fuse link / for short-circuit protection of the auxiliary switch / with type of assignment 1 / required		gG / Dz 10 A
Contact reliability		one incorrect switching operation of 100 million switching operations (5 V, 1 mA)
Thermal current	A	10
Voltage type / of operating voltage		AC/DC
Reference code		S
<ul style="list-style-type: none"> • according to DIN EN 61346-2 • according to DIN 40719 extended according to IEC 204-2 / according to IEC 750 		S
Ambient temperature		

• during operating	°C	-25 ... +70
• during storage	°C	-25 ... +80
protection type IP		
• of the terminal		IP20
• of the enclosure		IP40
Operating voltage / 1 / at 50 Hz / for AC / rated value	V	250
Operating voltage		
• 1 / for DC / rated value	V	230
Operating current		
• at AC-12		
• at 24 V	A	10
• at 48 V	A	10
• at 110 V	A	10
• at 230 V	A	10
• at AC-15		
• at 24 V	A	4
• at 48 V	A	4
• at 110 V	A	4
• at 230 V	A	4
• at DC-12		
• at 24 V	A	10
• at 48 V	A	5
• at 110 V	A	2.5
• at 230 V	A	1
• at DC-13		
• at 24 V	A	3
• at 48 V	A	1.5
• at 110 V	A	0.7
• at 230 V	A	0.3
Suitability for integration		
• pressure selection button		No
• front element		No
• suspension switch		Yes
• suspension pushbutton		Yes
Insulation voltage / rated value	V	250
Impulse voltage resistance / rated value	kV	4
Operating cycles / maximum	1/h	1,000
Electrical operating cycles as operating time / with contactors 3RT1015 to 3RT1026 / typical		10,000,000
Mechanical operating cycles as operating time / typical		10,000,000

Product component		
• fluorescent materials		No
• diode		No
• lamp transformer		No
• series resistance		No
Mounting type		clip-on
Width	mm	7.5
Height	mm	18.5
Depth	mm	16

Certificates/ approvals:

General Product Approval	Declaration of Conformity	other
 CCC  CSA  EAC	 EG-Konf.	Confirmation Environmental Confirmations

Further information:

Information- and Downloadcenter (Catalogs, Brochures,...)

<http://www.siemens.com/industrial-controls/catalogs>

Industry Mall (Online ordering system)

<http://www.siemens.com/industrial-controls/mall>

Cax online generator

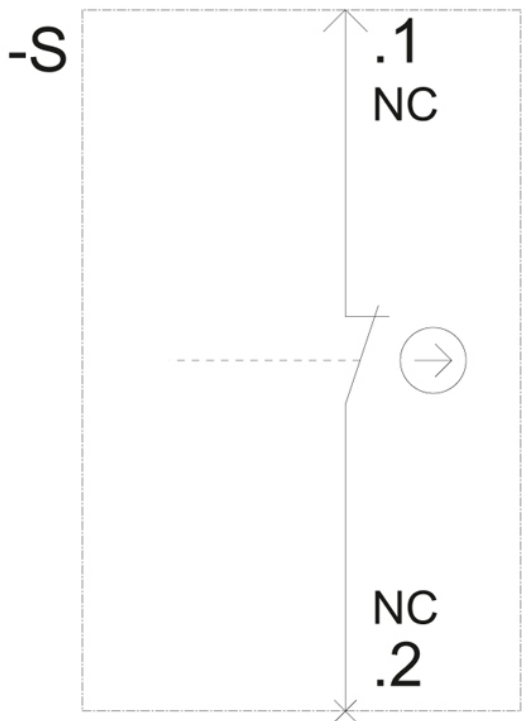
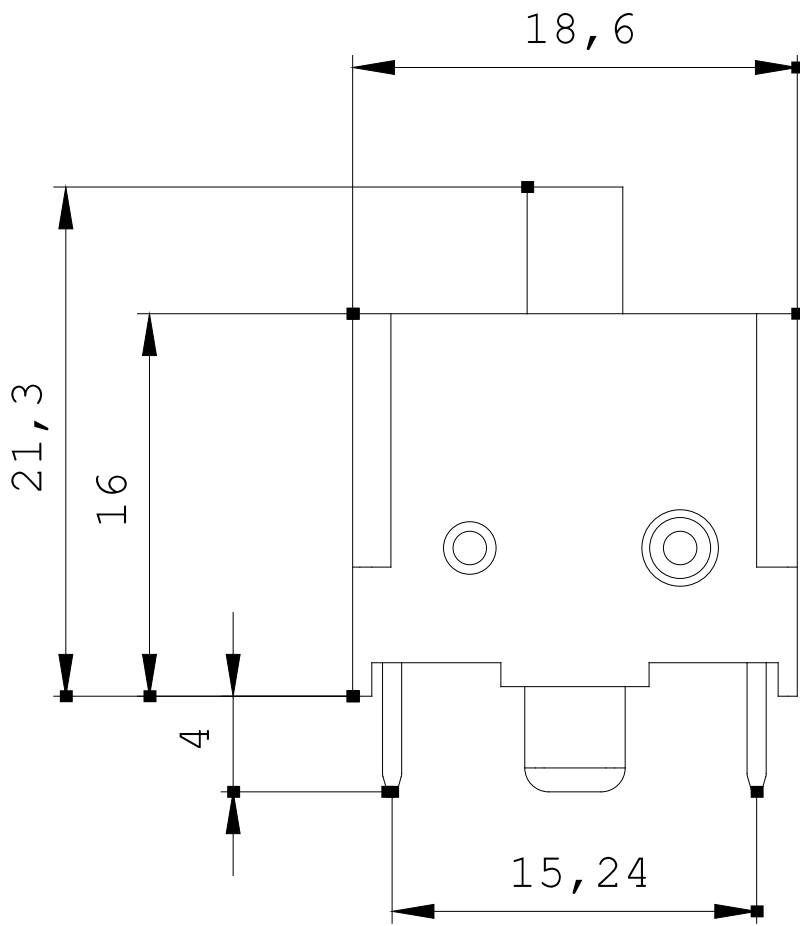
<http://www.siemens.com/cax>

Service&Support (Manuals, Certificates, Characteristics, FAQs,...)

<http://support.automation.siemens.com/WWW/view/en/3SB3411-0C/all>

Image database (product images, 2D dimension drawings, 3D models, device circuit diagrams, ...)

http://www.automation.siemens.com/bilddb/cax_en.aspx?mlfb=3SB3411-0C



last change:

Jul 7, 2014