



TWO-HAND OPERATOR PANEL FOR COMMAND DEVICES,
22MM, ROUND,
ENCLOSURE MATERIAL PLASTIC,
ENCLOSURE TOP PART GRAY,
3 COMMAND POSITIONS,
2 MUSHROOM PUSHBUTTONS, BLACK, 40MM,
EACH WITH 1NO+1NC,
1 EMERGENCY-STOP MUSH. PUSHBUTTON, RED,
40MM, POSITIVE LATCHING, 2NC,
WITH 8 PRESET BREAKING POINTS FOR FURTHER
COMMAND DEVICES,
WITH CABLE BREAK-THROUGHS FOR METRIC SCREW
GLANDS

Enclosure:	
Design of the enclosure	Two-hand operation console
Material / of the enclosure	plastic
Color / of top part of the enclosure	grey
Number of Command Points	3
Product component / protective collar	Yes
Form / of the enclosure front	rectangular
Design of electrical connection / on enclosure	Cable routing above and below, both 1 x M20
Mounting type / of enclosure	Horizontal
Product function / EMERGENCY STOP function	Yes

Actuato/ signaling device:	
Design of the operating mechanism	Emergency stop mushroom pushbutton / mushroom pushbutton
Assembling of the commanding and signaling device	A = Mushroom pushbutton / B = Emergency stop mushroom pushbutton / C = Mushroom pushbutton
Number of mushroom pushbuttons	3
Number of indicator lights	0
Number of pushbuttons	0
Number of key-operated switches	0
Color / of the activation element	A = black / B = red / C = black

Material / of the activation element		plastic
Product component / front ring		Yes
Material / of the front ring		plastic
Color / of the front ring		black
Type of unlocking device		A = pull-to-unlatch mechanism / B = rotate-to-unlatch mechanism / C = pull-to-unlatch mechanism

Holder:

Material / of the holder		Plastic
---------------------------------	--	---------

Contact block/ lampholder:

Number of switching elements		5
Number of NC contacts / for auxiliary contacts		4
Number of NO contacts / for auxiliary contacts		2
Number of changeover contacts / for auxiliary contacts		0
Product function / positive opening		Yes
Mounting type / of contact blocks, socket, and accessories		Front mounting
Design of electrical connection / of contact blocks, socket, and accessories		Screw-type terminal
Product component / fluorescent materials		No
Product extension / optional / fluorescent materials		Yes

Accessories:

Number of backing plates		1
Marking / of backing plate		EMERGENCY-STOP
Color / of backing plate		Yellow
Number of labeling plates		0
Product component / holder for 3 switching elements		No





General technical details:

Voltage type / of operating voltage		AC/DC
Operating voltage		
• for DC		
• rated value	V	5 ... 230
• 1 / for DC / rated value	V	230
• at 50 Hz / at AC		
• rated value	V	5 ... 400
• 1 / at 50 Hz / for AC / rated value	V	400
• at 60 Hz / at AC		
• rated value	V	5 ... 300
• 1 / at 60 Hz / for AC / rated value	V	300
Operating current		

<ul style="list-style-type: none"> • at AC-12 <ul style="list-style-type: none"> • at 24 V / rated value • at 48 V / rated value • at 110 V / rated value • at 230 V / rated value • at 400 V / rated value • at AC-15 <ul style="list-style-type: none"> • at 24 V / rated value • at 48 V / rated value • at 110 V / rated value • at 230 V / rated value • at 400 V / rated value • at DC-12 <ul style="list-style-type: none"> • at 24 V / rated value • at 48 V / rated value • at 110 V / rated value • at 230 V / rated value • at DC-13 <ul style="list-style-type: none"> • at 24 V / rated value • at 48 V / rated value • at 110 V / rated value • at 230 V / rated value 	A	10
	A	10
	A	10
	A	10
	A	10
	A	6
	A	6
	A	6
	A	6
	A	3
	A	10
	A	5
	A	2.5
	A	1
	A	3
	A	1.5
	A	0.7
	A	0.3
Delivery state / pre-wired on strip terminal		No
Product component / stand/pedestal		No
Resistance against shock		
<ul style="list-style-type: none"> • for devices with incandescent lamp / according to IEC 60068-2-27 		<= 30g
<ul style="list-style-type: none"> • for devices without incandescent lamp / according to IEC 60068-2-27 		<= 50g
Resistance against vibration / according to IEC 60068-2-6		20 ... 200 Hz: 5g
Reference code		
<ul style="list-style-type: none"> • according to DIN EN 61346-2 		S
<ul style="list-style-type: none"> • according to DIN 40719 extended according to IEC 204-2 / according to IEC 750 		S
Tightening torque / of the screws in the bracket / maximum	N·m	1
Ambient temperature		
<ul style="list-style-type: none"> • during operating 	°C	-25 ... +70
<ul style="list-style-type: none"> • during storage 	°C	-40 ... +80
Protection class IP		IP65
B10 value / with high demand rate / according to SN 31920		100,000

Proportion of dangerous failures / with high demand rate / according to SN 31920	%	20
Proportion of dangerous failures / with low demand rate / according to SN 31920	%	20
Failure rate [FIT] / with low demand rate / according to SN 31920	FIT	100
T1 value / for proof test interval or service life / according to IEC 61508	a	20
climatic class / during the operating phase / according to EN 60721		3K6
Shape / of the installation hole		round
Mounting diameter	mm	22
Width	mm	160
Height	mm	493
Depth	mm	183

Certificates/ approvals:

General Product Approval	Declaration of Conformity	Test Certificates	Shipping Approval
	 UL	 EG-Konf.	Special Test Certificate  DNV

other

[Confirmation](#)

[Environmental Confirmations](#)

Further information:

Information- and Downloadcenter (Catalogs, Brochures,...)

<http://www.siemens.com/industrial-controls/catalogs>

Industry Mall (Online ordering system)

<http://www.siemens.com/industrial-controls/mall>

Cax online generator

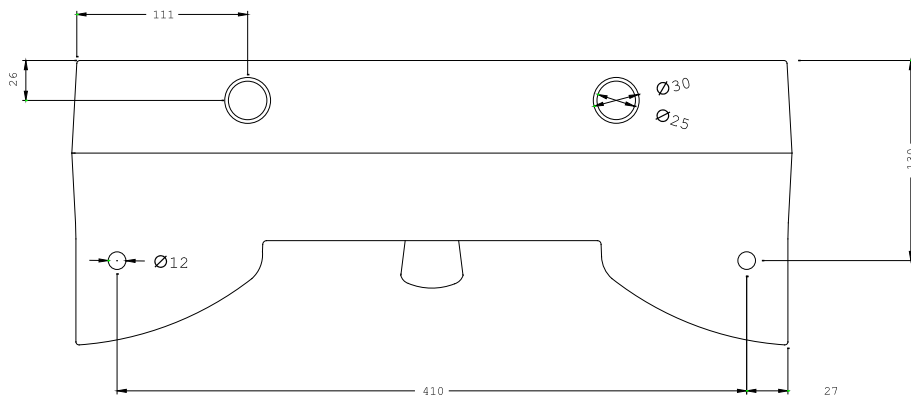
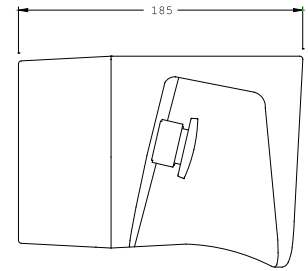
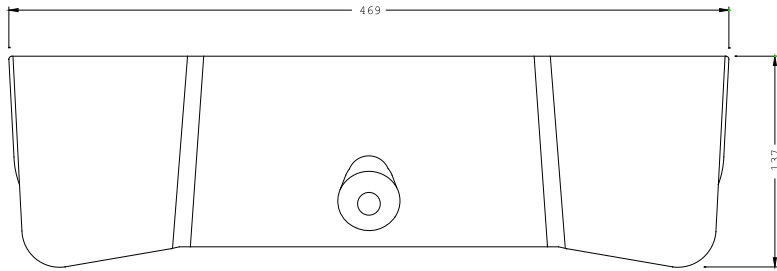
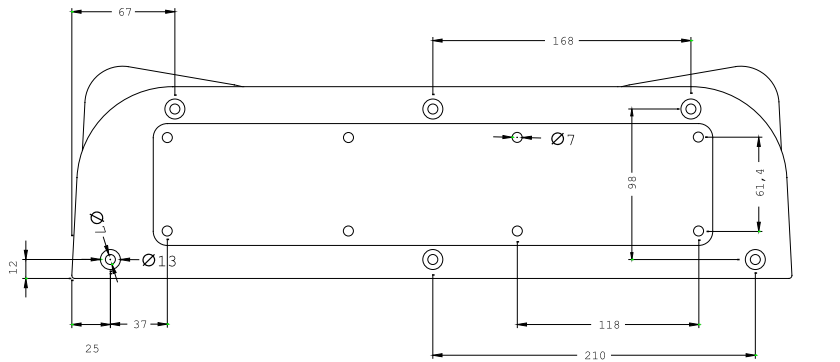
<http://www.siemens.com/cax>

Service&Support (Manuals, Certificates, Characteristics, FAQs,...)

<http://support.automation.siemens.com/WWW/view/en/3SB3863-1BB3/all>

Image database (product images, 2D dimension drawings, 3D models, device circuit diagrams, ...)

http://www.automation.siemens.com/bilddb/cax_en.aspx?mlfb=3SB3863-1BB3



last change:

Jul 7, 2014