



SAFETY POSITION SWITCH WITH SEPARATE ACTUATOR, MOULDED-PLASTIC ENCLOSED, OPERATION FROM THE SIDE AND THE FRONT, 3X(M20X1.5) 1NO+2NC, PULLING FORCE 5N DELIVERED WITHOUT ACTUATOR

General technical details:		
product designation		safety position switch
Active principle		mechanical
Product function / status display		No
Design of the interface / for safety-related communication		without
Item designation / according to DIN 40719 extendable after IEC 204-2 / according to IEC 750		S
Item designation / according to DIN EN 61346-2		B
Enclosure:		
Design of the housing		wide
Design of the housing / according to standard		No
Coating / of the enclosure		Other types
Material / of the enclosure		glass fiber reinforced thermoplast
Length of the sensor	mm	90
Width of the sensor	mm	52
Drive Head:		
Design of the operating mechanism		without
Contact:		
Design of the contact element		slow-action contacts

Number of NC contacts / for auxiliary contacts		2
Number of NO contacts / for auxiliary contacts		1
Number of change-over switches / for auxiliary contacts		0
Design of the switching function		positive opening
Design of the electrical connection		screw-type terminals

#### Ambient conditions:

Protection class IP		IP65
---------------------	--	------

#### Certificates/approvals:

Verification of suitability		CE / UL / CSA / CCC
Acceptability for application / safety cut-out switch		Yes
Explosion protection category for gas		none
Explosion protection category for dust		none
Ambient temperature		
• during operating	°C	85 ... -30

#### General Product Approval

#### Declaration of Conformity



CSA



GOST



UL



EG-Konf.

#### Shipping Approval

#### other



ABS



LRS



PRS



RINA

[Confirmation](#)

[other](#)

#### Further information:

##### Information- and Downloadcenter (Catalogs, Brochures,...)

<http://www.siemens.com/industrial-controls/catalogs>

##### Industry Mall (Online ordering system)

<http://www.siemens.com/industrial-controls/mall>

##### CAX-Online-Generator

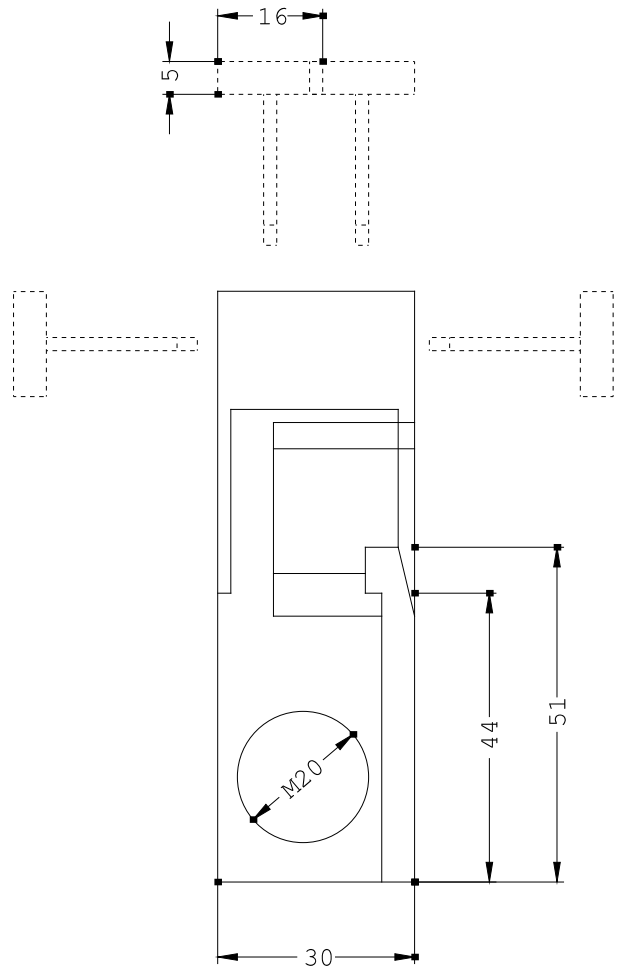
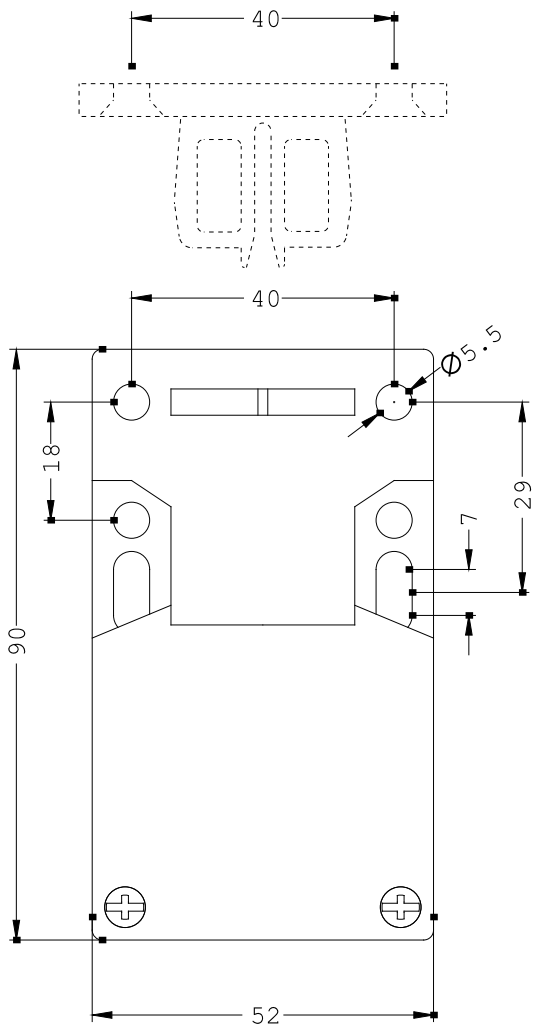
<http://www.siemens.com/cax>

##### Service&Support (Manuals, Certificates, Characteristics, FAQs,...)

<http://support.automation.siemens.com/WW/view/en/3SE2243-0XX40/all>

##### Image database (product images, 2D dimension drawings, 3D models, device circuit diagrams, ...)

[http://www.automation.siemens.com/bilddb/cax\\_en.aspx?mlfb=3SE2243-0XX40](http://www.automation.siemens.com/bilddb/cax_en.aspx?mlfb=3SE2243-0XX40)



last change:

Jan 21, 2013