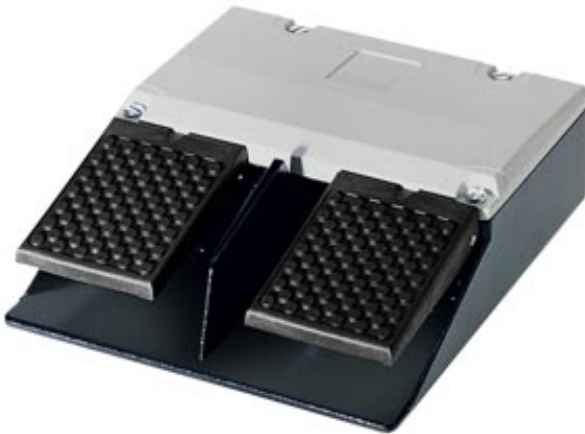


FOOT-OPERATED PUSHBUTTON TWO PEDALS,
CABLE ENTRY M20X1,5 WITH IP65, 1NO+1NC



General technical details:		
Product designation		momentary-contact foot switch
Product equipment / interlock		No
Product equipment / notch		No
Product component / covering		Yes
Operating current / at AC-15 / at 230 V / rated value	A	16
Number of switching steps		1
Number of the activation pedals		2
Reference code / according to DIN 40719 extended according to IEC 204-2 / according to IEC 750		S
Reference code / according to DIN EN 61346-2		S
Mounting type		screw fixing
Enclosure:		
Material / of the enclosure		metal
Color / of the housing		black
Color / of top part of the enclosure		grey
Color		grey-black
Width	mm	193
Height	mm	221
Depth	mm	63

Contact:		
Number of NC contacts / for auxiliary contacts		1
Number of NO contacts / for auxiliary contacts		1
Cable gland version		M25 x 1.5

Ambient conditions:		
Protection class IP		IP65
Ambient temperature / during operating	°C	80
Ambient temperature / during operating	°C	-25

Certificates/approvals:		
Suitability for use / safety cut-out switch		No
General Product Approval	Declaration of Conformity	



Shipping Approval

other



[Confirmation](#)

[other](#)

Further information:
Information- and Downloadcenter (Catalogs, Brochures,...) http://www.siemens.com/industrial-controls/catalogs
Industry Mall (Online ordering system) http://www.siemens.com/industrial-controls/mall
CAX-Online-Generator http://www.siemens.com/cax
Service&Support (Manuals, Certificates, Characteristics, FAQs,...) http://support.automation.siemens.com/WWW/view/en/3SE2932-0AA20/all
Image database (product images, 2D dimension drawings, 3D models, device circuit diagrams, ...) http://www.automation.siemens.com/bilddb/cax_en.aspx?mlfb=3SE2932-0AA20

last change:

Jan 21, 2013