



LL3-LM35450

LL3

FIBERS

SICK
Sensor Intelligence.



Illustration may differ

Ordering information

| Type | Part no. |
|-------------|----------|
| LL3-LM35450 | 2073489 |

Other models and accessories → www.sick.com/LL3

Detailed technical data

Features

| | |
|--|--|
| Device type | Fibers |
| Detection principle | Proximity system (consisting of a sender and a receiver) |
| For fiber-optic sensor | GLL170(T), WLL180T |
| Fiber length | 450 mm |
| Fiber material | Glass |
| Jacket material | Polyvinylchlorid (PVC) |
| Fiber head material | Chrome-plated metal coil |
| Outer diameter, fiber-optic cable connection | 2.2 mm |
| Smooth sleeve diameter (greatest diameter) | 5.8 mm |
| Fiber-optic head design | Smooth sleeve |
| Fiber arrangement | Multi-fiber – linear arrangement |
| Core structure | Multi-fiber – linear arrangement |
| Bend radius, fibre-optic cable | 20 mm |
| Angle of dispersion < 60° | No |
| Compatibility with infrared light (1,450 nm) | Yes |
| Ambient operating temperature | -10 °C ... +60 °C |
| Highly flexible/elastic fibers (bend radius 1–4 mm) | No |
| Adapter end sleeves required | No |
| Angle of dispersion | 60° |
| Integrated lens | No |
| Minimal object diameter | 0.5 mm |
| Compatibility tip adapters | No |

Mechanics/electronics

| | |
|---------------------------------------|-------------------|
| Bend radius, fibre-optic cable | 20 mm |
| Ambient operating temperature | -10 °C ... +60 °C |

Classifications

| | |
|---------------------|----------|
| ECl@ss 5.0 | 27270905 |
| ECl@ss 5.1.4 | 27270905 |
| ECl@ss 6.0 | 27270905 |
| ECl@ss 6.2 | 27270905 |

| | |
|-----------------------|----------|
| ECI@ss 7.0 | 27270905 |
| ECI@ss 8.0 | 27270905 |
| ECI@ss 8.1 | 27270905 |
| ECI@ss 9.0 | 27270905 |
| ECI@ss 10.0 | 27270905 |
| ECI@ss 11.0 | 27270905 |
| ETIM 5.0 | EC002651 |
| ETIM 6.0 | EC002651 |
| ETIM 7.0 | EC002651 |
| UNSPSC 16.0901 | 39121528 |

Sensing ranges with WLL180T

| | |
|---|--------|
| Operating mode 16 μs | 50 mm |
| Operating mode 70 μs | 160 mm |
| Operating mode 250 μs | 190 mm |
| Operating mode 2 ms | 200 mm |
| Operating mode 8 ms | 201 mm |

Sensing ranges with GLL170

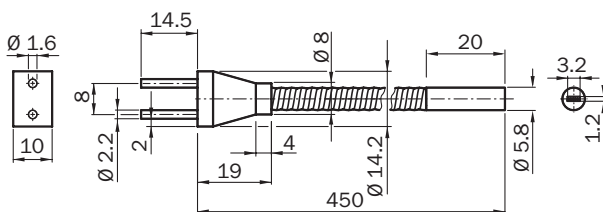
| | |
|---|--------|
| Operating mode 250 μs | 105 mm |
|---|--------|

Sensing ranges with GLL170T

| | |
|---|-------|
| Operating mode 50 μs | 54 mm |
| Operating mode 250 μs | 96 mm |

Dimensional drawing (Dimensions in mm (inch))

LL3-LM35450



SICK AT A GLANCE

SICK is one of the leading manufacturers of intelligent sensors and sensor solutions for industrial applications. A unique range of products and services creates the perfect basis for controlling processes securely and efficiently, protecting individuals from accidents and preventing damage to the environment.

We have extensive experience in a wide range of industries and understand their processes and requirements. With intelligent sensors, we can deliver exactly what our customers need. In application centers in Europe, Asia and North America, system solutions are tested and optimized in accordance with customer specifications. All this makes us a reliable supplier and development partner.

Comprehensive services complete our offering: SICK LifeTime Services provide support throughout the machine life cycle and ensure safety and productivity.

For us, that is “Sensor Intelligence.”

WORLDWIDE PRESENCE:

Contacts and other locations –www.sick.com