

CONTACTOR SIZE 14 3-POLE AC-3 450KW, 400/380V (690V)  
 AUX. SWITCHES 33 (3NO+3NC) BRIDGE RECTIFIER  
 INTEGRATED WITH CHANGEOVER CONT. 3TC44 AC  
 ACTUATION 220 TO 240 V AC 50/60 HZ

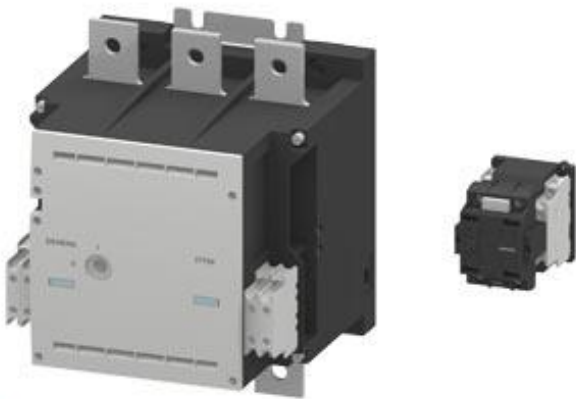


Figure similar

General technical data:	
Size of contactor	14
Protection class IP on the front	IP00
Ambient temperature during operation	55 ... -25 °C
Equipment marking acc. to DIN 40719 extended according to IEC 204-2 acc. to IEC 750	K
Equipment marking acc. to DIN EN 61346-2	Q
Main circuit:	
Number of poles for main current circuit	3
Operating current at AC-1 at 400 V	
• at ambient temperature 40 °C rated value	910 A
Number of NC contacts for main contacts	0
Number of NO contacts for main contacts	3
Operating current at AC-3 at 400 V rated value	820 A
Operating power	
• at AC-1 at 400 V rated value	558 kW
• at AC-3 at 400 V rated value	450 kW

**Control circuit/ Control:**

<b>Control version of the switch operating mechanism</b>	conventional
<b>Type of voltage of the control supply voltage</b>	AC
<b>Control supply voltage frequency</b> <ul style="list-style-type: none"><li>• 1 rated value</li><li>• 2 rated value</li></ul>	50 Hz 60 Hz
<b>Control supply voltage</b> <ul style="list-style-type: none"><li>• at AC<ul style="list-style-type: none"><li>— at 50 Hz<ul style="list-style-type: none"><li>— rated value</li></ul></li><li>— at 60 Hz<ul style="list-style-type: none"><li>— rated value</li></ul></li></ul></li></ul>	220 ... 240 V  220 ... 240 V

**Auxiliary circuit:**

<b>Number of NC contacts for auxiliary contacts</b> <ul style="list-style-type: none"><li>• lagging switching</li><li>• instantaneous contact</li></ul>	0 3
<b>Number of NO contacts for auxiliary contacts</b> <ul style="list-style-type: none"><li>• leading contact</li><li>• instantaneous contact</li></ul>	0 3

**Connections/ Terminals:**

<b>Type of electrical connection</b> <ul style="list-style-type: none"><li>• for main current circuit</li><li>• for auxiliary and control current circuit</li></ul>	screw-type terminals screw-type terminals
<b>Identification number and letter for switching elements</b>	33

**Mechanical data:**

<b>Mounting type</b>	screw fixing
<b>Mounting type Side-by-side mounting</b>	Yes
<b>Width</b>	230 mm
<b>Height</b>	295 mm
<b>Depth</b>	237 mm

**Certificates/ approvals:**

General Product Approval	Functional Safety/Safety of Machinery
--------------------------	---------------------------------------



CCC



CSA



UL



UR



[Baumusterprüfbescheinigung](#)

Functional Safety/Safety of Machinery	Test Certificates	Shipping Approval
---------------------------------------	-------------------	-------------------

[Baumusterbescheinigung](#)

[spezielle Prüfbescheinigung](#)



GL



LRS

Shipping Approval	other
-------------------	-------



PRS



RMRS

[Umweltbestätigung](#)

[sonstig](#)

### Further information

**Information- and Downloadcenter (Catalogs, Brochures,...)**

<http://www.siemens.com/industrial-controls/catalogs>

**Industry Mall (Online ordering system)**

<http://www.siemens.com/industrymall>

**Cax online generator**

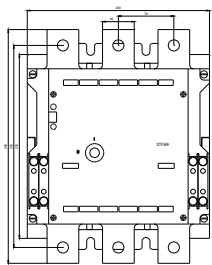
<http://support.automation.siemens.com/WW/CAXorder/default.aspx?lang=en&mfb=3TF6933-1QL7>

**Service&Support (Manuals, Certificates, Characteristics, FAQs,...)**

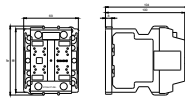
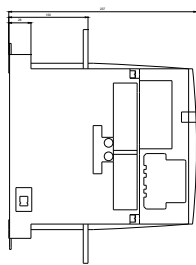
<https://support.industry.siemens.com/cs/ww/en/ps/3TF6933-1QL7>

**Image database (product images, 2D dimension drawings, 3D models, device circuit diagrams, EPLAN macros, ...)**

[http://www.automation.siemens.com/bilddb/cax\\_de.aspx?mfb=3TF6933-1QL7&lang=en](http://www.automation.siemens.com/bilddb/cax_de.aspx?mfb=3TF6933-1QL7&lang=en)



**last modified:**



07/08/2016