

## PSEN ml s 2.1 switch

570409



Schutztürsystem mit mechanischer Zuhaltung, reihenschaltfähige Version, mit Power Reset, IP67, 12-pol. M12 Stecker mit Kabelschwanz 230 mm, 4 LEDs auf 3 Seiten, SIL 3/PL e/Kat. 4, 8 maliges Einlernen eines neuen Betätiger möglich, Verpackungsinhalt = 1 vollcodierter Sensor ohne Betätiger

## Technische Daten

Zertifizierungen:	CE;cULus Listed;TÜV;FCC;IC
Sensorprinzip:	Transponder
Art der Codierung:	vollcodiert
Anzahl OSSD-Ausgänge:	2
Anschlussart:	M12, 12pol. male
Geeignet für Serienschaltung:	ja
Versorgungsspannung (V):	24,0
Leistungsaufnahme DC:	1.0 W
Art der Versorgungsspannung:	DC
Schutzart Gehäuse:	IP67
Codierstufe nach ISO 14119:	hoch
Abmessung Breite:	40.0 mm
Abmessung Höhe:	217.2 mm
Abmessung Tiefe:	40.0 mm
Bruttogewicht:	1300 g
Nettogewicht:	950 g
Umgebungstemperatur:	0 - 60 °C

## Optionales Zubehör



540319

PSEN cable axial M12 8-pole 3m



540320

PSEN cable axial M12 8-pole 5m



540321

PSEN cable axial M12 8-pole 10m



540326

PSEN cable axial M12 8-pole 30m



540340

PSEN cable M12-8sf M12-8sm, 2m



540341

PSEN cable M12-8sf M12-8sm, 5m



540343

PSEN cable M12-8sf M12-8sm, 20m



540344

PSEN cable M12-8sf M12-8sm, 30m



540342

PSEN cable M12-8sf M12-8sm, 10m

	540333	PSEN cable M12-8sf, 20m
	540347	PSEN cable M12-8sf M12-8sm, 1,5m
	540345	PSEN cable M12-8sf M12-8sm, 0,5m
	540346	PSEN cable M12-8sf M12-8sm, 1m
	570490	PSEN ml mounting plate
	570492	PSEN ml bracket sliding door
	570495	PSEN ml door handle sliding door
	570496	PSEN ml door handle swinging door 70
	570497	PSEN ml door handle swinging door 80



570493

PSEN ml bracket swinging door 70



570494

PSEN ml bracket swinging door 80



570489

PSEN ml / PSENcs Y junction M12



570487

PSEN ml end adapter



570486

PSEN ml Y junction M12



570499

PSEN screw set bracket sliding door



570498

PSEN screw set bracket swinging door



570361

PSEN cable M12-12sf/M12-12sm 10m



570360

PSEN cable M12-12sf/M12-12sm 5m



570355

PSEN cable M12-12sf 30m

---



570351

PSEN cable M12-12sf 3m

---



570352

PSEN cable M12-12sf 5m

---



570359

PSEN cable M12-12sf/M12-12sm 3m

---



570350

PSEN cable M12-12sf 2m

---



570354

PSEN cable M12-12sf 20m

---



570353

PSEN cable M12-12sf 10m

---



570356

PSEN cable M12-12sf 50m

---



570357

PSEN cable M12-12sf/M12-12sm 1m

---



570358

PSEN cable M12-12sf/M12-12sm 2m



570362

PSEN cable M12-12sf/M12-12sm 20m



570462

PSEN ml escape release extension



570471

PSEN ml escape release cordset 2,0m



570474

PSEN ml escape release cordset 3,5m



570472

PSEN ml escape release cordset 2,5m



570470

PSEN ml escape release cordset 1,5m



570473

PSEN ml escape release cordset 3,0m



570460

PSEN ml escape release



570475

PSEN ml escape release cordset 4,0m



570468

PSEN ml escape release cordset 1,0m



570467

PSEN ml escape release cordset 0,75m



570469

PSEN ml escape release cordset 1,25m



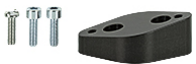
570466

PSEN ml escape release cordset 0,5m



570485

PSEN ml actuator center ring



570484

PSEN ml actuator 10° adapter