

Figure similar

MLFB-Ordering data 1FG1102-1RE04-2AE1-Z  
D02+K06+N23

Client order no. :

Order no. :

Offer no. :

Remarks :

Item no. :

Consignment no. :

Project :

### Gearbox data

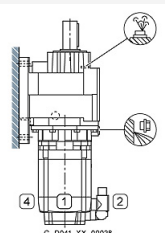
Gear box type	Z29	Radial force maximum	1060 N
Gearbox basic type	Helical geared	Max. permissible radial force with Mmax	1060 N
Gearbox size	29	Moment of inertia	0.37 kgcm <sup>2</sup>
Transmission stages	2	Torsional stiffness	6 Nm/°
Transmission (ratio)	5.31	Efficiency	0.96
Gear number relation	186/35	Mounting position	M2
Output moment maximum (short-time)	91 Nm	Mounting type	Foot-mounted
max. input speed (briefly)	4500 rpm	Output shaft version	Solid shaft standard
Output speed short-time	847 rpm	Output shaft dimension	V25x50 mm
Emergency off output moment (1000 cycles)	154 Nm	Gearbox flange diameter	-/-
		Output shaft bearing	No
		Figure 2 torque support	-

### General tech. specifications

Degree of protection	IP65
Color of the housing	Standard painting (Anthracite RAL 7016)
Specification	CE / UL / CSA / EAC / cRUus
Net weight	13.37 kg
1m-sound pressure level L <sub>pA</sub> (ToI.+3dB(A))	70
Plug position	top (default) (2)
Adapter flange position	top (default) (2)

### Lubrication and sealing

Gear oil	Mineral oil CLP ISO VG220
Output shaft sealing	Standard
Oil charge	0.70 l



MLFB-Ordering data 1FG1102-1RE04-2AE1-Z  
D02+K06+N23

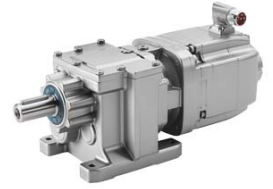


Figure similar

Motor data		Limiting data	
Motor type	Permanent-magnet synchronous motor	Maximum speed (short-time)	7200 rpm
Motor type	Compact	Maximum torque	18.00 Nm
DC-link voltage, max.	510...720V	Motor current short term	21.5 A
Shaft height	63 mm	<b>Optimum operating point</b>	
Cooling	Natural cooling	Optimum speed	4500 rpm
Rated speed	4500 rpm	Optimum power	1.55 kW
Rated torque (100K)	3.30 Nm	<b>Recommended Motor Module</b>	
Rated power	1.56 kW	Rated inverter current	9.0 A
Rated current (100K)	3.95 A	Maximum inverter current	27.0 A
Static torque	5.30 Nm	Maximum torque	18.0 Nm
Static current	5.70 A	<b>Holding brake</b>	
Moment of inertia	8.70000 kgcm <sup>2</sup>	Holding brake	with holding brake
Efficiency $\eta$	91 %	Holding brake version	Permanent-magnet brake
Temperature monitoring	Pt1000 temperature sensor	Power supply voltage	DC 24 V $\pm$ 10 %
Connector size	1	Braking torque $M_{1Br} / M_{2Br}$	8.50 Nm
Encoder system	Encoder AM20DQI: absolute encoder 20 bits (resolution 1048576, encoder-internal 512 S/R) + 12 bits multi-turn (traversing range 4096 revolutions)	Holding torque $M_{4Br}$	13.00 Nm
		Opening time	100.0 ms
		Closing time	50.0 ms
		Maximum switching energy per braking action	380.0 J

### Info servo geared motor

Outside the standard temperature range of -10 to +40 °C, further selectable options must be observed, in addition to the lubricant selection.

Further, you have to check the suitability of the components and options used for the requested temperature range.

MLFB-Ordering data 1FG1102-1RE04-2AE1-Z  
D02+K06+N23

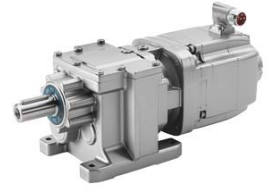


Figure similar

### Options

D02	M2 for helical and parallel shaft gearboxes
K06	Mineral oil CLP ISO VG220
N23	Standard holding brake (permanent magnet brake)

### Standards

**Compliance with standards** CE / UL / CSA / EAC / cRUus

**CE marking** EN 60034