

**IE-FCI-PWB-DE-OR****Weidmüller Interface GmbH & Co. KG**

Klingenbergstraße 26

D-32758 Detmold

Germany

www.weidmueller.com



FrontCom® Vario integrates multiple functions in only one single frame. The system is easy to install and you can select from a wide range of data, signal and power modules. In addition to being extremely compact, FrontCom® Vario offers a number of unique product features that will make your project planning and work activities secure, fast and future-proof. Furthermore, the FrontCom® Vario system has an attractive housing design that, by the way, offers highest impact-resistance and fully meets the requirements of IP 65 protection class.

**General ordering data**

Version	FrontCom, Insert Power large, Type F, Socket connector, DE, orange
Order No.	<a href="#">1554000000</a>
Type	IE-FCI-PWB-DE-OR
GTIN (EAN)	4050118360806
Qty.	1 pc(s).

Creation date March 24, 2021 5:50:45 AM CET

Catalogue status 12.03.2021 / We reserve the right to make technical changes.

## IE-FCI-PWB-DE-OR

Weidmüller Interface GmbH &amp; Co. KG

Klingenbergstraße 26

D-32758 Detmold

Germany

www.weidmueller.com

## Technical data

## Dimensions and weights

Net weight	34.028 g	Weight	37 g
------------	----------	--------	------

## Temperatures

Operating temperature	-5 °C...50 °C
-----------------------	---------------

## General data

Connector face	Type F	Insert type	Insert Power large
Protection degree	IP20		

## Clampable conductors

Conductor connection cross-section, extremely flexible with wire end ferrule	1.5 ... 1.5 mm <sup>2</sup>		
Conductor connection cross-section, extremely flexible with wire end ferrule	max.	1.5 mm <sup>2</sup>	
	min.	1.5 mm <sup>2</sup>	
Conductor connection cross-section, extremely flexible without wire end ferrule	1.5 ... 2.5 mm <sup>2</sup>		
Conductor connection cross-section, extremely flexible without wire end ferrule	min.	1.5 mm <sup>2</sup>	
	max.	2.5 mm <sup>2</sup>	
Conductor connection cross-section, flexible with wire end ferrule	1.5 ... 1.5 mm <sup>2</sup>		
Conductor connection cross-section, flexible with wire end ferrule	max.	1.5 mm <sup>2</sup>	
	min.	1.5 mm <sup>2</sup>	
Conductor connection cross-section, flexible without wire end ferrule	1.5 ... 2.5 mm <sup>2</sup>		
Conductor connection cross-section, flexible without wire end ferrule	max.	2.5 mm <sup>2</sup>	
	min.	1.5 mm <sup>2</sup>	
Conductor connection cross-section, rigid	1.5 ... 2.5 mm <sup>2</sup>		
Conductor connection cross-section, rigid	max.	2.5 mm <sup>2</sup>	
	min.	1.5 mm <sup>2</sup>	
Stripping length	10 mm		
Type of connection	PUSH IN		

## Technical data

Housing main material	Polycarbonate PC	Rated current	16 A
Rated voltage (AC)	250 V		

## General standards

Certificate No. (GERMLLOYD)	13866-15
-----------------------------	----------

## Classifications

ETIM 6.0	EC001121	ETIM 7.0	EC001121
ECLASS 9.0	27-44-03-90	ECLASS 9.1	27-18-90-90
ECLASS 10.0	27-44-03-90	ECLASS 11.0	27-44-03-90

**Data sheet**

**IE-FCI-PWB-DE-OR**

**Weidmüller Interface GmbH & Co. KG**  
 Klingenbergstraße 26  
 D-32758 Detmold  
 Germany

www.weidmueller.com

**Technical data**

**Approvals**

Approvals



ROHS

Conform

**Downloads**

Approval/Certificate/Document of  
 Conformity

[GL\\_FrontCom](#)

Engineering Data

[STEP](#)

User Documentation

[MAN IE GUIDE DE](#)

[MAN IE GUIDE EN](#)

[Socket Insert Overview EN](#)

[Socket Insert Overview DE](#)

[Designation key / Type key](#)

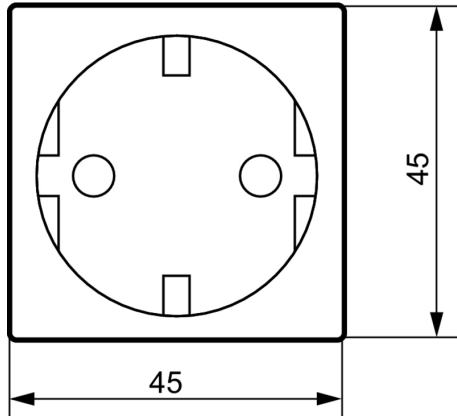
**IE-FCI-PWB-DE-OR**

**Weidmüller Interface GmbH & Co. KG**  
Klingenbergstraße 26  
D-32758 Detmold  
Germany

[www.weidmueller.com](http://www.weidmueller.com)

**Drawings**

**Dimensioned drawing**



**Dimensioned drawing**

