

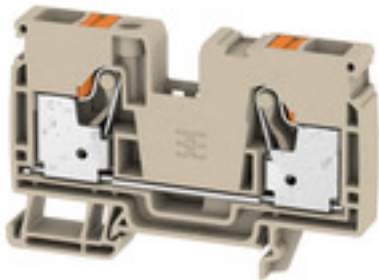
A2C 10**Weidmüller Interface GmbH & Co. KG**

Klingenbergstraße 26

D-32758 Detmold

Germany

www.weidmueller.com

Product image**Spring connection with PUSH IN Technology**

The innovative PUSH IN technology reduces the amount of time you spend on wiring to a minimum. Direct insertion guarantees high conductor pull-out forces and simple handling for all conductor types.

General ordering data

| | |
|------------|---|
| Version | Feed-through terminal, PUSH IN, 10 mm ² , 1000 V, 57 A, dark beige |
| Order No. | 2490360000 |
| Type | A2C 10 |
| GTIN (EAN) | 4050118500813 |
| Qty. | 25 pc(s). |

Creation date March 29, 2021 5:47:24 PM CEST

Catalogue status 12.03.2021 / We reserve the right to make technical changes.

A2C 10

Weidmüller Interface GmbH & Co. KG

Klingenbergstraße 26

D-32758 Detmold

Germany

www.weidmueller.com

Technical data

Dimensions and weights

| | | | |
|--------------------------|------------|----------------|------------|
| Depth | 51.5 mm | Depth (inches) | 2.028 inch |
| Depth including DIN rail | 52.5 mm | Height | 80.5 mm |
| Height (inches) | 3.169 inch | Net weight | 32.315 g |
| Width | 10 mm | Width (inches) | 0.394 inch |

Temperatures

| | | | |
|----------------------------------|----------------|----------------------------------|--------|
| Storage temperature | -25 °C...55 °C | Continuous operating temp., min. | -60 °C |
| Continuous operating temp., max. | 130 °C | | |

Material data

| | | | |
|--------------------------------|--------|---------------------------|------------|
| Material | Wemid | Colour | dark beige |
| Colour of operational elements | orange | UL 94 flammability rating | V-0 |

Rating data IECEx/ATEX

| | | | |
|--------------------------------|--------------------|---------------------------------|---------------------|
| Certificate No. (ATEX) | TUEV16ATEX7909U | Certificate No. (IECEX) | IECEXTUR16.0036U |
| Max. voltage (ATEX) | 550 V | Current (ATEX) | 52 A |
| Wire cross section max. (ATEX) | 10 mm ² | Max. voltage (IECEX) | 550 V |
| Current (IECEX) | 52 A | Wire cross section max. (IECEX) | 0.5 mm ² |
| Marking EN 60079-7 | Ex eb II C Gb | Ex 2014/34/EU label | II 2 G D |

System specifications

| | | | |
|-------------------------------|-----|-------------------------------------|-------|
| End cover plate required | Yes | Number of potentials | 1 |
| Number of levels | 1 | Number of clamping points per level | 2 |
| Number of potentials per tier | 1 | Rail | TS 35 |

Additional technical data

| | | | |
|---------------------|-------|-------------------|---------|
| Installation advice | Rail | Open sides | right |
| Snap-on | No | Type of fixing | Snap-on |
| Type of mounting | TS 35 | With snap-in pegs | No |

CSA rating data

| | | | |
|-------------------------------|-----------------|-------------------------------|-------|
| Certificate No. (CSA) | 200039-70089609 | Current size B (CSA) | 55 A |
| Current size C (CSA) | 55 A | Current size D (CSA) | 5 A |
| Voltage size B (CSA) | 600 V | Voltage size C (CSA) | 600 V |
| Voltage size D (CSA) | 600 V | Wire cross section max. (CSA) | 6 AWG |
| Wire cross section min. (CSA) | 20 AWG | | |

Conductors for clamping (rated connection)

| | |
|--|---------------------|
| Blade size | 1.0 x 5.5 mm |
| Clamping range, max. | 10 mm ² |
| Clamping range, min. | 0.5 mm ² |
| Connection cross-section, stranded, max. | 10 mm ² |
| Connection cross-section, stranded, min. | 0.5 mm ² |
| Connection direction | top |
| Gauge to IEC 60947-1 | A6 |
| Number of connections | 2 |
| Stripping length | 18 mm |

Creation date March 29, 2021 5:47:24 PM CEST

A2C 10

Weidmüller Interface GmbH & Co. KG

Klingenbergstraße 26

D-32758 Detmold

Germany

www.weidmueller.com

Technical data

| | | | |
|---|--|---------------------|----------------------|
| Tube length for AEH with plastic collar DIN 46228/4 | Tube length | min. | 18 mm |
| | Cross-section for conductor connection | min. | 1.5 mm ² |
| | | max. | 4 mm ² |
| | Tube length | min. | 12 mm |
| max. | | 18 mm | |
| Tube length for AEH without plastic collar DIN 46228/1 | Cross-section for conductor connection | min. | 1.5 mm ² |
| | | max. | 10 mm ² |
| | Tube length | nominal | 18 mm |
| | | | |
| Tube length for twin wire-end ferrule | Tube length | nominal | 18 mm |
| | Cross-section for conductor connection | min. | 0.75 mm ² |
| | | max. | 1 mm ² |
| | Tube length | min. | 12 mm |
| max. | | 18 mm | |
| Cross-section for conductor connection | min. | 1.5 mm ² | |
| | max. | 4 mm ² | |
| Twin wire-end ferrules, max. | 4 mm ² | | |
| Twin wire-end ferrules, min. | 0.5 mm ² | | |
| Type of connection | PUSH IN | | |
| Wire connection cross section AWG, max. | AWG 6 | | |
| Wire connection cross section AWG, min. | AWG 20 | | |
| Wire connection cross section, finely stranded, max. | 10 mm ² | | |
| Wire connection cross-section, finely stranded with wire-end ferrules DIN 46228/1, max. | 10 mm ² | | |
| Wire connection cross-section, finely stranded with wire-end ferrules DIN 46228/1, min. | 0.5 mm ² | | |
| Wire connection cross-section, finely stranded with wire-end ferrules DIN 46228/4, max. | 10 mm ² | | |
| Wire connection cross-section, finely stranded with wire-end ferrules DIN 46228/4, min. | 0.5 mm ² | | |
| Wire connection cross-section, solid core, max. | 10 mm ² | | |
| Wire connection cross-section, solid core, min. | 0.5 mm ² | | |

General

| | | | |
|--|------------------|--|-------|
| Installation advice | Rail | Rail | TS 35 |
| Standards | DIN EN 60947-7-1 | Wire connection cross section AWG, max. | AWG 6 |
| Wire connection cross section AWG, min. | AWG 20 | | |

Rating data

| | | | |
|---|---------|---------------------------------|--------------------|
| Power loss in accordance with IEC 60947-7-x | 1.82 W | Rated cross-section | 10 mm ² |
| Rated voltage | 1,000 V | Rated current | 57 A |
| Current at maximum wires | 57 A | Standards | DIN EN 60947-7-1 |
| Volume resistance according to IEC 60947-7-x | 0.56 mΩ | Rated impulse withstand voltage | 8 kV |
| Pollution severity | 3 | Surge voltage category | III |

Creation date March 29, 2021 5:47:24 PM CEST

A2C 10

Weidmüller Interface GmbH & Co. KG

Klingenbergstraße 26

D-32758 Detmold

Germany

www.weidmueller.com

Technical data

UL rating data

| | | | |
|--|--------|--|-------|
| Certificate No. (cURus) | E60693 | Conductor size Factory wiring max. (cURus) | 6 AWG |
| Conductor size Factory wiring min. (cURus) | 20 AWG | Conductor size Field wiring max. (cURus) | 6 AWG |
| Conductor size Field wiring min. (cURus) | 20 AWG | Current size B (cURus) | 55 A |
| Current size C (cURus) | 55 A | Current size D (cURus) | 5 A |
| Voltage size B (cURus) | 600 V | Voltage size C (cURus) | 600 V |
| Voltage size D (cURus) | 600 V | | |

Classifications

| | | | |
|-------------|-------------|-------------|-------------|
| ETIM 6.0 | EC000897 | ETIM 7.0 | EC000897 |
| ECLASS 9.0 | 27-14-11-20 | ECLASS 9.1 | 27-14-11-20 |
| ECLASS 10.0 | 27-14-11-20 | ECLASS 11.0 | 27-14-11-20 |

Approvals

Approvals



| | |
|-----------------------|---------|
| ROHS | Conform |
| UL File Number Search | E60693 |

Downloads

| | |
|---|--|
| Approval/Certificate/Document of Conformity | Attestation of Conformity IECEX Certificate ATEX Certificate EAC certificate DNVGL certificate MARITREG certificate CCC Ex Certificate Declaration of Conformity Declaration of Conformity |
| Engineering Data | STEP |
| Engineering Data | EPLAN |
| Tender specification | Klippon® Connect 2490360000 DE Klippon® Connect 2490360000 EN |
| User Documentation | StorageConditionsTerminalBlocks NTI A2C 10 |

Data sheet

A2C 10

Weidmüller Interface GmbH & Co. KG
Klingenbergstraße 26
D-32758 Detmold
Germany

www.weidmueller.com

Drawings

