

SIPLUS HMI TP1200 COMFORT FOR MEDIAL STRESS WITH CONFORMAL COATING BASED ON 6AV2124-0MC01-0AX0

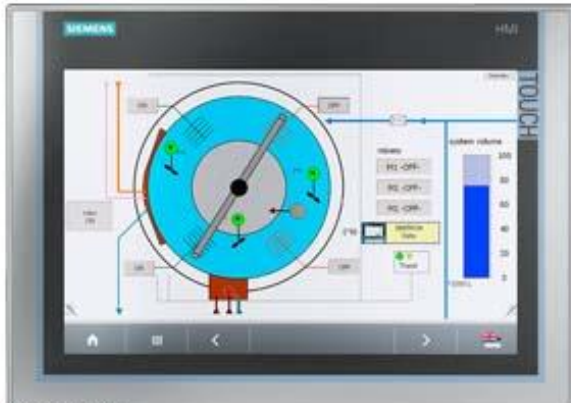


Figure similar

General information	
Product type designation	SIPLUS HMI TP1200 Comfort
Display	
Design of display	TFT
Screen diagonal	12.1 in
Display width	261.1 mm
Display height	163.2 mm
Number of colors	16 777 216
Resolution (pixels)	
• Horizontal image resolution	1 280 Pixel
• Vertical image resolution	800 Pixel
Backlighting	
• MTBF backlighting (at 25 °C)	80 000 h
• Backlight dimmable	Yes; 0-100 %
Control elements	
Keyboard fonts	
• Function keys	
— Number of function keys	0

• Keys with LED	No
• System keys	No
• Numeric/alphabetical input	
— Numeric keyboard	Yes; Onscreen keyboard
— alphanumeric keyboard	Yes; Onscreen keyboard
Touch operation	
• Design as touch screen	Yes
Expansions for operator control of the process	
• DP direct LEDs (LEDs as S7 output I/O)	
— F1...Fx	0
• Direct keys (keys as S7 input I/O)	
— F1...Fx	0
• Direct keys (touch buttons as S7 input I/O)	40
Installation type/mounting	
Mounting in portrait format possible	Yes
Mounting in landscape format possible	Yes
Mounting position	vertical
maximum permissible angle of inclination without external ventilation	35°
Supply voltage	
Type of supply voltage	DC
Rated value (DC)	24 V
permissible range, lower limit (DC)	19.2 V
permissible range, upper limit (DC)	28.8 V
Input current	
Current consumption (rated value)	0.85 A
Starting current inrush I ² t	0.5 A ² ·s
Power	
Power consumption, typ.	20 W
Processor	
Processor type	X86
Memory	
Flash	Yes
RAM	Yes
nutzbarer Speicher für Anwenderdaten	12 Mbyte
Type of output	
Info LED	No
Power LED	No
Error LED	No
Acoustics	

- Buzzer No
- Speaker Yes

Time of day

Clock

- Hardware clock (real-time clock) Yes
- Software clock No
- retentive Yes; Back-up duration typically 6 weeks
- synchronizable Yes

Interfaces

Number of RS 485 interfaces	1; RS 422/485 combined
Number of USB interfaces	2; USB 2.0
Number of USB Mini B interfaces	1; 5-pole
Number of 20 mA interfaces (TTY)	0
Number of RS 232 interfaces	0
Number of RS 422 interfaces	1
Number of parallel interfaces	0
Number of other interfaces	0
Number of SD card slots	2
With software interfaces	No

Industrial Ethernet

- Number of industrial Ethernet interfaces 2
- Industrial Ethernet status LED 2
- Number of ports of the integrated switch 2

Protocols

PROFINET	Yes
Supports protocol for PROFINET IO	Yes
IRT	Yes; As of WinCC V12
MRP	Yes; As of WinCC V12
PROFIBUS	Yes
MPI	Yes

Protocols (Ethernet)

- TCP/IP Yes
- DHCP Yes
- SNMP Yes
- DCP Yes
- LLDP Yes

WEB characteristics

- HTTP Yes
- HTTPS No
- HTML Yes
- XML No

• CSS	Yes
• Active X	No
• JavaScript	Yes
• Java VM	No

Further protocols	
• CAN	No
• MODBUS	Yes
• EtherNet/IP	Yes

EMC

Emission of radio interference acc. to EN 55 011	
• Limit class A, for use in industrial areas	Yes
• Limit class B, for use in residential areas	No

Degree and class of protection

IP (at the front)	IP65
Enclosure Type 4 at the front	Yes
Enclosure Type 4x at the front	Yes
IP (rear)	IP20

Standards, approvals, certificates

CE mark	Yes
cULus	Yes
RCM (formerly C-TICK)	Yes
KC approval	Yes

Marine approval

• Germanischer Lloyd (GL)	No
• American Bureau of Shipping (ABS)	No
• Bureau Veritas (BV)	No
• Det Norske Veritas (DNV)	No
• Lloyds Register of Shipping (LRS)	No
• Nippon Kaiji Kyokai (Class NK)	No
• Polski Rejestr Statkow (PRS)	No

Use in hazardous areas

• ATEX Zone 2	Yes
• ATEX Zone 22	Yes
• cULus Class I Zone 1	No
• cULus Class I Zone 2, Division 2	Yes
• FM Class I Division 2	No

Ambient conditions

Ambient temperature during operation	
• Operation (vertical installation) — For vertical installation, min.	0 °C; = Tmin

— For vertical installation, max.	50 °C; = Tmax
• Operation (max. tilt angle)	
— At maximum tilt angle, min.	0 °C; = Tmin
— At maximum tilt angle, min.	40 °C; = Tmax
• Operation (vertical installation, portrait format)	
— For vertical installation, min.	0 °C; = Tmin
— For vertical installation, max.	40 °C; = Tmax
• Operation (max. tilt angle, portrait format)	
— At maximum tilt angle, min.	0 °C; = Tmin
— At maximum tilt angle, min.	35 °C; = Tmax
Ambient temperature during storage/transportation	
• min.	-20 °C
• max.	60 °C
Extended ambient conditions	
• relative to ambient temperature-atmospheric pressure-installation altitude	Tmin ... Tmax at 1080 hPa ... 795 hPa (-1000 m ... +2000 m) // Tmin ... (Tmax - 10K) at 795 hPa ... 658 hPa (+2000 m ... +3500 m) // Tmin ... (Tmax - 20K) at 658 hPa ... 540 hPa (+3500 m ... +5000 m)
Relative humidity	
— With condensation, tested in accordance with IEC 60068-2-38, max.	100 %; RH incl. condensation/frost (no commissioning under condensation conditions)
Resistance	
— against biologically active substances / conformity with EN 60721-3-3	Yes; Class 3B2 mold, fungus and dry rot spores (with the exception of fauna). The supplied connector covers must remain on the unused interfaces during operation!
— against chemically active substances / conformity with EN 60721-3-3	Yes; Class 3C4 (RH < 75%) incl. salt spray according to EN 60068-2-52 (degree of severity 3). The supplied connector covers must remain on the unused interfaces during operation!
— against mechanically active substances / conformity with EN 60721-3-3	Yes; Class 3S4 incl. sand, dust. The supplied connector covers must remain on the unused interfaces during operation!
Operating systems	
proprietary	No
Configuration	
Message indicator	Yes
Alarm logging system (incl. buffer and acknowledgment)	Yes
Process value display (output)	Yes
Process value default (input) possible	Yes
Recipe administration	Yes
Configuration software	
• STEP 7 Basic (TIA Portal)	No
• STEP 7 Professional (TIA Portal)	No
• WinCC flexible Compact	No

• WinCC flexible Standard	No
• WinCC flexible Advanced	No
• WinCC Basic (TIA Portal)	No
• WinCC Comfort (TIA Portal)	Yes; from V11
• WinCC Advanced (TIA Portal)	Yes; from V11
• WinCC Professional (TIA Portal)	Yes; from V11

Languages

Online languages

• Number of online/runtime languages	32
--------------------------------------	----

Project languages

• Languages per project	32
• Project languages	
— D	Yes
— GB	Yes
— F	Yes
— I	Yes
— E	Yes
— Chinese traditional	Yes
— Chinese simplified	Yes
— DK	Yes
— FIN	Yes
— GR	Yes
— J	Yes
— KP / ROK	Yes
— NL	Yes
— N	Yes
— PL	Yes
— P	Yes
— RUS	Yes
— S	Yes
— CZ	Yes
— SK	Yes
— TR	Yes
— H	Yes

Functionality under WinCC (TIA Portal)

Libraries	Yes
Applications/options	
• Web browser	Yes
• Pocket Word	Yes
• Pocket Excel	Yes

• PDF Viewer	Yes
• Media Player	Yes
• SIMATIC WinCC Sm@rtServer	Yes
• SIMATIC WinCC Audit	Yes
Number of Visual Basic Scripts	Yes
Task planner	
• time-controlled	Yes
• task-controlled	Yes
Help system	
• Number of characters per info text	70
Message system	
• Number of alarm classes	32
• Bit messages	
— Number of bit messages	4 000
• Analog messages	
— Number of analog messages	200
• S7 alarm number procedure	Yes
• System messages HMI	Yes
• System messages, other (SIMATIC S7, Sinumerik, Simotion, etc.)	Yes
• Number of characters per message	80
• Number of process values per message	8
• Acknowledgment groups	Yes
• Message indicator	Yes
• Message buffer	
— Number of entries	1 024
— Circulating buffer	Yes
— retentive	Yes
— maintenance-free	Yes
Recipe administration	
• Number of recipes	300
• Data records per recipe	500
• Entries per data record	1 000
• Size of internal recipe memory	2 Mbyte
• Recipe memory expandable	Yes
Variables	
• Number of variables per device	2 048
• Number of variables per screen	400
• Limit values	Yes
• Multiplexing	Yes
• Structures	Yes
• Arrays	Yes

Images	
• Number of configurable images	500
• Permanent window/default	Yes
• Global image	Yes
• Start screen configurable	Yes
• Image selection by PLC	Yes
• Image number in the PLC	Yes
Image objects	
• Number of objects per image	400
• Text fields	Yes
• I/O fields	Yes
• Graphic I/O fields (graphics list)	Yes
• Symbolic I/O fields (text list)	Yes
• Date/time fields	Yes
• Switches	Yes
• Buttons	Yes
• Graphic display	Yes
• Icons	Yes
• Geometric objects	Yes
Complex image objects	
• Number of complex objects per screen	20
• Alarm view	Yes
• Trend view	Yes
• User view	Yes
• Status/control	Yes
• Sm@rtClient view	Yes
• Recipe view	Yes
• f(x) trend view	Yes
• System diagnostics view	Yes
• Media Player	Yes
• Bar graphs	Yes
• Sliders	Yes
• Pointer instruments	Yes
• Analog/digital clock	Yes
Lists	
• Number of text lists per project	500
• Number of entries per text list	500
• Number of graphics lists per project	500
• Number of entries per graphics list	500
Archiving	
• Number of archives per device	50

• Number of entries per archive	20 000
• Message archive	Yes
• Process value archive	Yes
• Archiving methods	
— Sequential archive	Yes
— Short-term archive	Yes
• Memory location	
— Memory card	Yes
— USB memory	Yes
— Ethernet	Yes
• Data storage format	
— CSV	Yes
— TXT	Yes
— RDB	Yes
Security	
• Number of user groups	50
• Number of user rights	32
• Number of users	50
• Password export/import	Yes
• SIMATIC Logon	Yes
Logging through printer	
• Alarms	Yes
• Report (shift log)	Yes
• Hardcopy	Yes
• Electronic print to file	Yes; pdf, html
Character sets	
• Keyboard fonts	
— US English	Yes
• Fonts	
— Tahoma	Yes
— Arial	Yes
— Courier New	Yes
— WinCC Standard	Yes
— Ideographic languages	Yes
• Font size freely scalable	Yes
• additional character sets loadable	Yes
Transfer (upload/download)	
• MPI/PROFIBUS DP	Yes
• USB	Yes
• Ethernet	Yes
• using external storage medium	No

Process coupling	
• S7-1200	Yes
• S7-1500	Yes
• S7-200	Yes
• S7-300/400	Yes
• LOGO!	Yes
• WinAC	Yes
• SINUMERIK	Yes; with SINUMERIK option package
• SIMOTION	No; With WinCC, subsequent version
• Allen Bradley (EtherNet/IP)	Yes
• Allen Bradley (DF1)	Yes
• Mitsubishi (MC TCP/IP)	Yes
• Mitsubishi (FX)	Yes
• OMRON (FINS TCP)	No
• OMRON (LINK/Multilink)	Yes
• Modicon (Modbus TCP/IP)	Yes
• Modicon (Modbus)	Yes
• OPC UA Client	Yes
• OPC UA Server	Yes
Service tools/configuration aids	
• Clean screen	Yes
• Touch calibration	Yes
• Backup/Restore manually	Yes
• Backup/Restore automatically	Yes
• Simulation	Yes
• Device switchover	Yes
• Delta transfer	Yes
Peripherals/Options	
Peripherals	
• Printer	Yes
• Multimedia Card	Yes
• SD card	Yes
• USB memory	Yes
• Network camera	Yes
Mechanics/material	
Material des Gehäuses (frontseitig)	
• Plastic	No
• Aluminum	Yes
• Stainless steel	No
Dimensions	

Width of the housing front	330 mm
Height of housing front	241 mm
Mounting cutout, width	310 mm
Mounting cutout, height	221 mm
Overall depth	65 mm

Weights

Weight without packaging	2.8 kg
Weight incl. packaging	3.5 kg

last modified: 13.08.2015