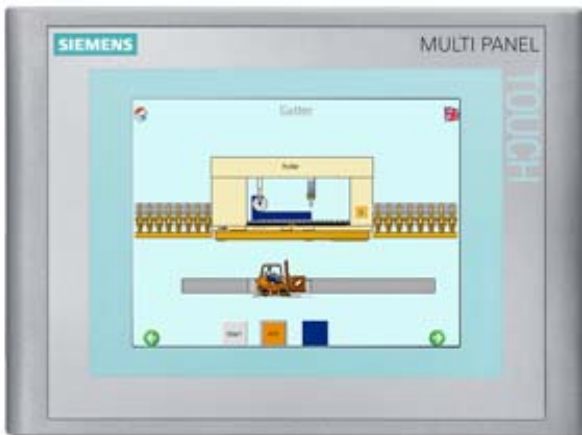


SIPLUS HMI MP177 6" FOR MEDIAL STRESS WITH CONFORMAL COATING BASED ON 6AV6642-0EA01-3AX0



General information

customer-specific configuration Yes

Display

Design of display TFT
Screen diagonal 5.7 in
Size 5.7"
Display type TFT, 65536 colors
Color type Colors

Resolution (pixels)

horizontal image resolution 320
vertical image resolution 240
Resolution (WxH in pixel) 320 x 240

Backlighting

MTBF backlighting (at 25 °C) about 50,000 hours

Control elements

Control elements Touch screen
Operating options Touch
Connection for mouse/keyboard/barcode reader USB / USB / USB

Keyboard fonts

Numeric/alphabetical input	Yes (on-screen keyboard) / Yes (on-screen keyboard)
hexadecimal keyboard	Yes ; Onscreen keyboard
Touch operation	
Touch screen	analog, resistive
Design as touch screen	Yes
Touch screen (analog/resistive)	Yes
Supply voltage	
Type of supply voltage	DC
Processor	
Processor	RISC 32-bit, 520 MHz
Processor type	RISC 32-bit
Memory	
Type	Flash / RAM
usable memory for user data	2 MB usable memory for user data
Main memory	
Capacity of main memory, maximum	128 Mbyte
Time of day	
Clock	
Type	Hardware clock, battery backup, synchronizable
Hardware clock (real-time clock)	Yes
battery-backed	Yes
synchronizable	Yes
Interfaces	
Interfaces	1 x RS422, 1 x RS485, 1 x Ethernet (RJ45) (max. 12 Mbit/s)
Number of RS 485 interfaces	1 ; together with RS422
Transmission rate, max.	12 Mbit/s
USB port	1 x USB
Multimedia card/SD card slot	combined
Special interfaces	No
Industrial Ethernet	
Industrial Ethernet interface	1 x Ethernet (RJ45)
Industrial Ethernet status LED	2
Protocols	
PROFIBUS	Yes
MPI	Yes
Protocols (Ethernet)	
TCP/IP	Yes
Protocols (terminal link)	

Sm@rtServer	Yes
EMC	
Emission of radio interference acc. to EN 55 011	
Emission of radio interference acc. to EN 55 011 (limit class A)	Yes ; EN 61000-6-4, interference emission: Intended for use in industrial areas.
Degree and class of protection	
Front	IP65
IP (at the front)	IP65
Rear	IP20
IP (rear)	IP20
Standards, approvals, certificates	
Certifications	CE
cULus	No
EMC	The product is designed for use in industrial environments. When used in residential areas, the emission of radio interference according to limit class B of EN 55011 must be ensured. For further information please refer to the user documentation.
Suitable for safety functions	No
Marine approval	
Germanischer Lloyd (GL)	No
American Bureau of Shipping (ABS)	No
Bureau Veritas (BV)	No
Det Norske Veritas (DNV)	No
Lloyds Register of Shipping (LRS)	No
Nippon Kaiji Kyokai (Class NK)	No
Polski Rejestr Statkow (PRS)	No
Use in hazardous areas	
EX zone 2	No
EX zone 22	No
FM Class I Division 2	No
Ambient conditions	
Mounting position	vertical
Operating temperature	
Operation	0 °C to +50 °C
Storage/transport temperature	
Transport, storage	-20 °C to +70 °C
Relative humidity	
Operation, max.	100 % ; Relative humidity, incl. condensation / frost permitted (no commissioning under condensation conditions)
Extended ambient conditions	

relative to ambient temperature-atmospheric pressure- installation altitude	Tmin ... Tmax at 1080 hPa ... 795 hPa (-1000 m ... +2000 m) // Tmin ... (Tmax - 10K) at 795 hPa ... 658 hPa (+2000 m ... +3500 m) // Tmin ... (Tmax - 20K) at 658 hPa ... 540 hPa (+3500 m ... +5000 m)
Resistance	
to biologically active substances/conformity with EN 60721-3-3	Yes ; Class 3B2 mold, fungus and dry rot spores (with the exception of fauna). The supplied connector covers must remain on the unused interfaces during operation!
to chemically active substances/conformity with EN 60721-3-3	Yes ; Class 3C4 incl. salt spray. The supplied connector covers must remain on the unused interfaces during operation!
to mechanically active substances/conformity with EN 60721-3-3	Yes ; Class 3S4 incl. sand, dust. The supplied connector covers must remain on the unused interfaces during operation!
Operating systems	
Operating system	Windows CE (Version 5)
Configuration	
Message indicator	Yes
With alarm logging system (incl. buffer and acknowledgment)	Yes
Process value display (output)	Yes
Process value default (input) possible	Yes
Recipe administration	Yes
Configuration software	
Configuration tool	WinCC flexible Compact Version 2008 SP1 or higher (to be ordered separately)
2. Configuration kit	WinCC flexible Compact
Version	Version 2008 SP1
Configuration tool	WinCC flexible
Type	Compact
Languages	
Online languages	
Number of online/runtime languages	5
Project languages	
Languages per project	32
Functionality under WinCC (TIA Portal)	
Libraries	Yes
Task planner	Yes
Help system	Yes
Number of characters per info text	70
Message system	
Number of alarm classes	32
Number of messages	2000
Bit messages	Yes
Analog messages	Yes

Number of bit messages	2000
Number of analog messages	2000
Telegram message procedure Alarm S	Yes
System messages HMI	Yes
System messages PLC	Yes
System messages, other (SIMATIC S7, Sinumerik, Simotion, etc.)	Yes
Message length (in characters)	80
Lines	1
Number of process values per message	8
Acknowledgment groups	Yes
Message indicator	Yes
First/last value	Yes
Recipe administration	
Number of recipes	100
Data records per recipe	200
Entries per data record	200
Recipe memory	32 KB integrated Flash, expandable
Variables	
Number of variables per device	1000
Number of variables per screen	50
Number of variables	1000
Limit values	Yes
Multiplexing	Yes
Structures	No
Type Date & Time	1000
Images	
Number of configurable images	500
Permanent window/default	Yes
Start screen configurable	Yes
Image selection by PLC	Yes
Image number in the PLC	Yes
Image objects	
Text objects	2,500 text elements
I/O fields per image	50
Date/time fields	30
Return	Yes
Graphics object	Bit maps, icons, vector graphics
Icons	500

Complex image objects	
Status/control	With SIMATIC S7
dynamic objects	Diagrams, bar graphs, sliders, analog display, invisible buttons
Number of objects per project	500
Number of curve diagrams per image	5
Methods	Trend / profile
Limit value lines	Yes
Number of bars per chart	5
Limit value lines	Yes
alphanumeric fields	1000
alphanumeric fields per image	50
numerical fields	1000
numerical fields per image	50
Password fields	1000
Number of slides per image	5
Number of analog indicators per image	5
Number of visible switches per project	1000
visible switches per image	100
hidden switches per image	100
Number of status switches per project	1000
Button status switches per image	100
Number of selector switches per project	200
Selector switches per image	100
Number of signal lamps per project	1000
Signal lamps per image	100
Attributes for dynamic objects	
Color change	Yes
X/Y movement	Yes
Hide	Yes
Angle of rotation	No
Lists	
Number of text lists per project	300
Number of text lists per image	10
Number of entries per text list	30
Number of graphics lists per project	100
Number of graphic lists per image	10
Number of entries per graphics list	30
Security	
Number of user groups	50

Number of user rights	32
Password export/import	Yes
Logging through printer	
Recording/Printing	Alarms, report (shift report), color print, hardcopy
Transfer (upload/download)	
Transfer of configuration	MPI/PROFIBUS DP, serial, USB, Ethernet, automatic transfer recognition
Process coupling	
Connection to controller	S5, S7-200, S7- 300/400, TI 505, Win AC, SINUMERIK, SIMOTION, Allen Bradley (DF1), Allen Bradley (DF485), Mitsubishi (FX), OMRON (LINK/Multilink), Modicon (Modbus), weitere Fremdtreiber siehe Kapitel "Systemkopplungen"
S7-200	Yes
PPI (point-to-point)	Yes
PPI network	Yes
MPI	Yes
PROFIBUS DP	Yes
Ethernet	Yes
S7-300/400	Yes
MPI	Yes
PROFIBUS DP	Yes
PROFINET	Yes
S5	Yes
PROFIBUS DP	Yes
TI 505	Yes
Allen Bradley (DF1)	Yes
Allen Bradley (DF485)	Yes
Mitsubishi (FX)	Yes
Mitsubishi (MP4)	Yes
Telemecanique (Uni-Telway)	Yes
OMRON (LINK/Multilink)	Yes
Modicon (Modbus)	Yes
GE-Fanuc (SNP)	Yes
Functions	
TAB sequence	Yes
Calculating functions	Yes
Animate	Yes
Service tools/configuration aids	
Clean screen	Yes
Touch calibration	Yes

Backup/Restore manually	Yes
Simulation	Yes
Device switchover	Yes
Peripherals/Options	
Peripherals	Printer, barcode reader
Multimedia Card	Yes
SD card	Yes ; WP gate is not supported.
USB memory	Yes
Additional software components loadable	Yes
Dimensions	
Front of enclosure (W x H)	212 mm x 156 mm
Weights	
Weight (without packaging)	0.85 kg ; max.
Other	
free hotline	Yes
Warranty period	1 a ; 10 years replacement from discontinuation
Status	Jul 30, 2014