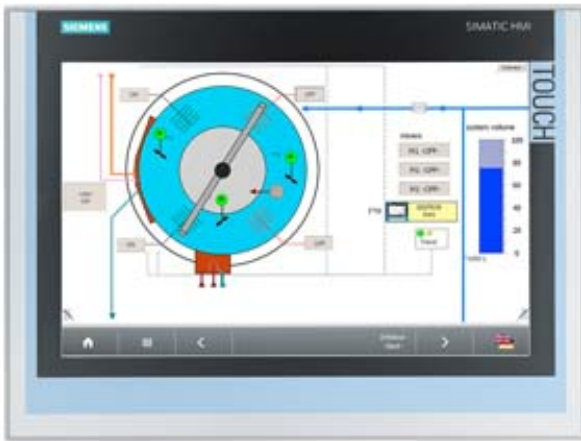


SIMATIC IFP1500 FLAT PANEL 15" DISPLAY (16:10),
 W/O TOUCH,
 DISPLAY ONLY STANDARD VERSION MAX. 5M,
 1280X800 PIXEL, FOR 24V DC,
 DISPLAYPORT / DVI INTERFACE INCL. DVI-CABLE 1,8M



General information

Short designation Flat Panel 15" display

Display

Screen diagonal	15.4 in
Screen diagonal (cm)	40 cm
Display width	331.2 mm
Display height	207 mm
Viewing angle	170° x 170°
Type	TFT widescreen display, LED backlighting
On Screen Display (OSD) configuration	No, can be set with the software
Number of colors (bit levels)	24 bit
Number of colors	16777216

Resolution (pixels)

horizontal image resolution	1280
vertical image resolution	800
Resolution (WxH in pixel)	1280 x 800
Pixel size, horizontal	0.259 mm
Pixel size, vertical	0.259 mm

General features

non-reflective and tempered mineral glass screen	Yes
Detachable from computer unit	5 m
Brightness/contrast	400 cd/m ² / 1000:1
Brightness, max.	400 cd/m ²
Backlighting	
Backlighting (type)	LED
MTBF backlighting (up to 50%, at 25 °C)	50000 h ; At 25°C
Backlight dimmable	Yes ; 0-100 %
Control elements	
Function keys	No
Installation type/mounting	
Built-in unit	Yes ; Portrait mode possible
permissible angle to the vertical backward (console)	35 °
permissible angle to the vertical forward (ceiling mounting)	35 °
Supply voltage	
Type of supply voltage	DC
DC	Yes
Rated value (DC)	24 V
permissible range, lower limit (DC)	19.2 V
permissible range, upper limit (DC)	28.8 V
Power loss	
Power loss DC	
typical	40 W
Maximum	65 W
Interfaces	
Video interfaces	
DVI-D	Yes
Display port	Yes ; Display port V1.1
Touch interfaces	
USB	No
Degree and class of protection	
IP65 at front	Yes
Enclosure Type 4 at the front	Yes
NEMA4 at the front	No
NEMA4X at the front	No
IP20 rear	Yes
Standards, approvals, certificates	
CE mark	Yes

KC approval	Yes
cULus	Yes ; Corresponds to UL 508
RCM (former C-TICK)	Yes
Use in hazardous areas	
FM Class I Division 2	Yes
Ambient conditions	
Min. ambient temperature	0 °C
Max. ambient temperature	50 °C ; Vertical installation (horizontal)
Storage/transport temperature	
min.	-20 °C
max.	60 °C
Relative humidity	
Relative humidity during operation	95 % ; Non-condensing
Vibrations	
Vibration load in operation	1 <i>g</i>
Vibration load during transport/storage	1 <i>g</i>
Shock testing	
Shock load during operation	15 <i>g</i>
Shock load during transport/storage	15 <i>g</i>
Mechanics/material	
Type of housing (front)	aluminum
Aluminum	Yes
Dimensions	
Width of the housing front	415 mm
Height of housing front	310 mm
Mounting cutout/device depth (W x H x D)	
Mounting cutout, width	396 mm ; Tolerance: +1 mm
Mounting cutout, height	291 mm ; Tolerance: +1 mm
Overall depth	62.5 mm
Weights	
Weight without packaging	3.9 kg
Weight incl. packaging	5 kg
Status	Jul 21, 2014