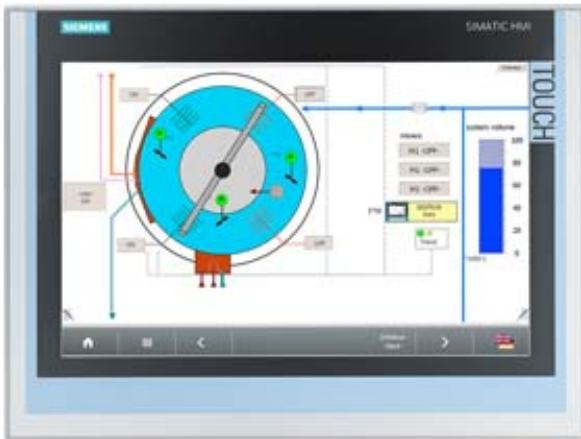


SIMATIC IFP1500 FLAT PANEL 15" DISPLAY (16:10), TOUCH, STANDARD VERSION MAX. 5M, 1280X800 PIXEL, FOR 24V DC, DISPLAYPORT / DVI INTERFACE INCL. DVI/USB-CABLE 1,8 M



## General information

**Short designation** Flat Panel 15" Touch

## Display

<b>Screen diagonal</b>	15.4 in
<b>Screen diagonal (cm)</b>	40 cm
<b>Display width</b>	331.2 mm
<b>Display height</b>	207 mm
<b>Viewing angle</b>	170° x 170°
<b>Type</b>	TFT widescreen display, LED backlighting
<b>On Screen Display (OSD) configuration</b>	No, can be set with the software
<b>Number of colors (bit levels)</b>	24 bit
<b>Number of colors</b>	16777216

## Resolution (pixels)

<b>horizontal image resolution</b>	1280
<b>vertical image resolution</b>	800
<b>Resolution (WxH in pixel)</b>	1280 x 800
<b>Pixel size, horizontal</b>	0.259 mm
<b>Pixel size, vertical</b>	0.259 mm

## General features

Detachable from computer unit	5 m
Brightness/contrast	400 cd/m <sup>2</sup> / 1000:1
Brightness, max.	400 cd/m <sup>2</sup>
<b>Backlighting</b>	
Backlighting (type)	LED
MTBF backlighting (up to 50%, at 25 °C)	50000 h ; At 25°C
Backlight dimmable	Yes ; 0-100 %
<b>Control elements</b>	
Function keys	No
<b>Touch operation</b>	
Touch keyboard	Yes
<b>Installation type/mounting</b>	
Built-in unit	Yes ; Portrait mode possible
permissible angle to the vertical backward (console)	35 °
permissible angle to the vertical forward (ceiling mounting)	35 °
<b>Supply voltage</b>	
Type of supply voltage	DC
DC	Yes
Rated value (DC)	24 V
permissible range, lower limit (DC)	19.2 V
permissible range, upper limit (DC)	28.8 V
<b>Power loss</b>	
Power loss DC	
typical	40 W
Maximum	65 W
<b>Interfaces</b>	
<b>Video interfaces</b>	
DVI-D	Yes
Display port	Yes ; Display port V1.1
<b>Touch interfaces</b>	
USB	Yes
<b>Degree and class of protection</b>	
IP65 at front	Yes
Enclosure Type 4 at the front	Yes
NEMA4 at the front	No
NEMA4X at the front	No
IP20 rear	Yes
<b>Standards, approvals, certificates</b>	

CE mark	Yes
KC approval	Yes
cULus	Yes ; Corresponds to UL 508
RCM (former C-TICK)	Yes
<b>Use in hazardous areas</b>	
FM Class I Division 2	Yes
<b>Ambient conditions</b>	
Min. ambient temperature	0 °C
Max. ambient temperature	50 °C ; Vertical installation (horizontal)
<b>Storage/transport temperature</b>	
min.	-20 °C
max.	60 °C
<b>Relative humidity</b>	
Relative humidity during operation	95 % ; Non-condensing
<b>Vibrations</b>	
Vibration load in operation	1 g
Vibration load during transport/storage	1 g
<b>Shock testing</b>	
Shock load during operation	15 g
Shock load during transport/storage	15 g
<b>Mechanics/material</b>	
Type of housing (front)	aluminum
Aluminum	Yes
<b>Dimensions</b>	
Width of the housing front	415 mm
Height of housing front	310 mm
Mounting cutout/device depth (W x H x D)	
Mounting cutout, width	396 mm ; Tolerance: +1 mm
Mounting cutout, height	291 mm ; Tolerance: +1 mm
Overall depth	62.5 mm
<b>Weights</b>	
Weight without packaging	3.9 kg
Weight incl. packaging	5 kg
Status	Jul 21, 2014