



EMPTY ENCLOSURE W. MOUNT. PLATE AND COVER, TRANSPARENT SIZE 2, MOUNTING DEPTH 147 MM COMPRISES 8HP1102+8HP1222+8HP6302

Similar to image

Technical data:

Width	mm	307
Height	mm	307
Depth	mm	147
RAL color number		7035
Protection class IP		IP65
Design of the cap/top cover		transparent
Mounting depth	mm	147
Surface processing		others
Acceptability for application / for outside use		No
Suitability for interaction / lightning protection		No
Material / of the enclosure		plastic
Product component		
• cable entry		Yes
• Mounting plate		Yes
Product extension / optional / Sequence		Yes

Certificates/approvals:

General Product Approval

Declaration of
Conformity

Test Certificates



[Special Test
Certificate](#)

Further information:

Information- and Downloadcenter (Catalogs, Brochures,...)

<http://www.siemens.com/lowvoltage/catalogs>

Industry Mall (Online ordering system)

<https://eb.automation.siemens.com/mall/en/WW/Catalog/Product/8HP2022>

Service&Support (Manuals, Certificates, Characteristics, FAQs,...)

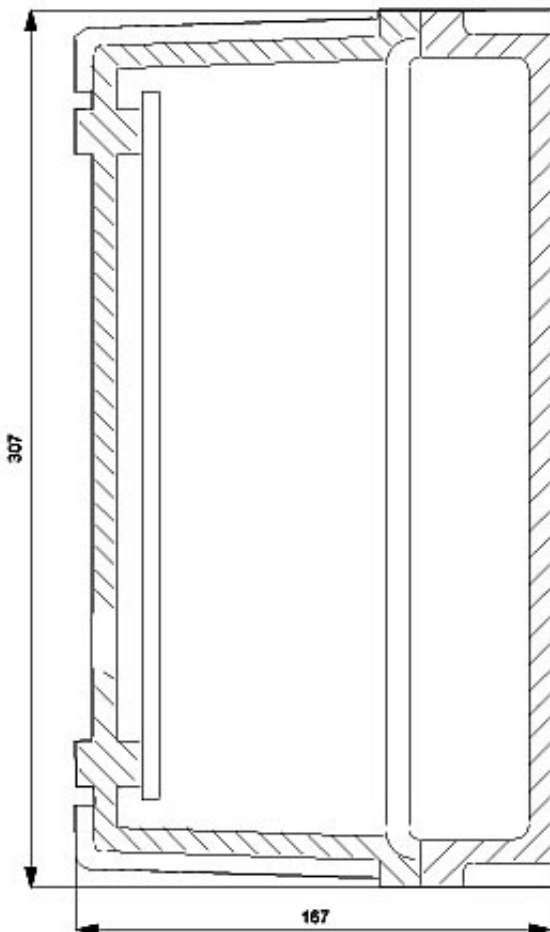
<http://support.automation.siemens.com/WW/view/en/8HP2022/all>

Image database (product images, 2D dimension drawings, 3D models, device circuit diagrams, ...)

http://www.automation.siemens.com/bilddb/cax_en.aspx?mlfb=8HP2022

CAX-Online-Generator

<http://www.siemens.com/cax>



last change:

Aug 12, 2014