






SIGNALLING COLUMN SINGLE-FLASH LIGHT ELEMENT
BLUE,
AC/DC 24V

| General technical details: | | |
|---|----|-------------|
| product brand name | | SIRIUS |
| Product component / fluorescent materials | | Yes |
| Design of the optical signal | | flash light |
| Type of voltage | | |
| <ul style="list-style-type: none"> of operating voltage | | DC |
| Operating voltage | | |
| <ul style="list-style-type: none"> 1 / for DC / rated value | V | 24 |
| Reference code | | |
| <ul style="list-style-type: none"> according to DIN EN 61346-2 | | P |
| Mechanical design: | | |
| Mounting type | | Bayonet |
| External diameter / of the signal column element | mm | 50 |
| Lamp: | | |
| Nature of fluorescent material | | LED |
| Ambient conditions: | | |
| Ambient temperature | | |
| <ul style="list-style-type: none"> during operating | °C | -20 ... +50 |

| | | |
|---------------------|----|------|
| Protection class IP | | IP54 |
| Height | mm | 67 |
| Width | mm | 52 |

Certificates/approvals:

| General Product Approval | Declaration of Conformity | Shipping Approval |
|---|---|---|
|  |  EG-Konf. |  |

Further information:

Information- and Downloadcenter (Catalogs, Brochures,...)

<http://www.siemens.com/industrial-controls/catalogs>

Industry Mall (Online ordering system)

<http://www.siemens.com/industrial-controls/mall>

Cax online generator:

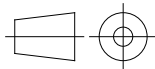
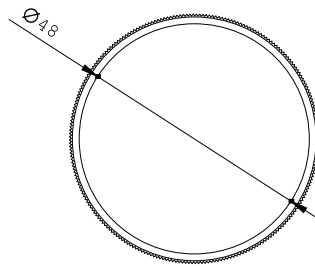
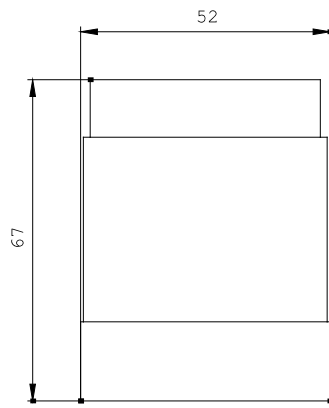
<http://www.siemens.com/cax>

Service&Support (Manuals, Certificates, Characteristics, FAQs,...)

<http://support.automation.siemens.com/WW/view/en/8WD4220-0CF/all>

Image database (product images, 2D dimension drawings, 3D models, device circuit diagrams, ...)

http://www.automation.siemens.com/bilddb/cax_en.aspx?mlfb=8WD4220-0CF



\W9.4444;
\W6.8611; 8WD

last change:

Jun 16, 2014