

ST.-LIGHT ELEMENTS LED, BLUE, AC/DC 24V



General technical details:

product brand name		SIRIUS
Product component / fluorescent materials		Yes
Design of the optical signal		continous light
Type of voltage		AC/DC
• of operating voltage		
Operating voltage		
• 1 / for DC / rated value	V	24
• 1 / at 50 Hz / for AC / rated value	V	24
• 1 / at 60 Hz / for AC / rated value	V	24
Reference code		P
• according to DIN EN 61346-2		

Mechanical design:

Mounting type		Bayonet
External diameter / of the signal column element	mm	50

Lamp:

Nature of fluorescent material		LED
---------------------------------------	--	-----

Ambient conditions:

Ambient temperature		
• during operating	°C	-20 ... +50
Protection class IP		IP54
Height	mm	67
Width	mm	52

Certificates/approvals:

General Product Approval	EMC	Declaration of Conformity	Shipping Approval
	 UL	 C-TICK	 EG-Konf.
			 DNV

Further information:

Information- and Downloadcenter (Catalogs, Brochures,...)

<http://www.siemens.com/industrial-controls/catalogs>

Industry Mall (Online ordering system)

<http://www.siemens.com/industrial-controls/mall>

Cax online generator:

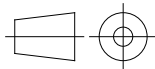
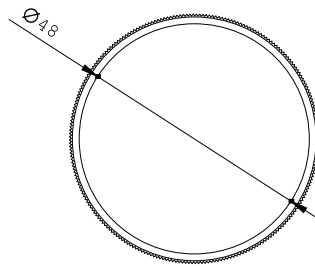
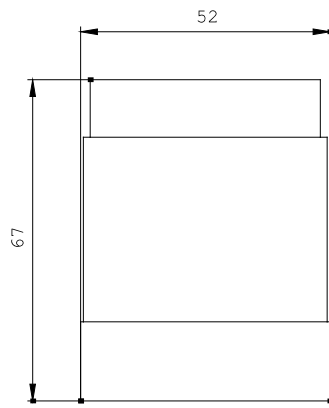
<http://www.siemens.com/cax>

Service&Support (Manuals, Certificates, Characteristics, FAQs,...)

<http://support.automation.siemens.com/WW/view/en/8WD4220-5AF/all>

Image database (product images, 2D dimension drawings, 3D models, device circuit diagrams, ...)

http://www.automation.siemens.com/bilddb/cax_en.aspx?mlfb=8WD4220-5AF



\W9.4444;
\W6.8611; 8WD

last change:

Jun 16, 2014