

ST.-LIGHT ELEMENTS LED,230V AC, RED



**General technical details:**

<b>product brand name</b>		SIRIUS
<b>Product component / fluorescent materials</b>		Yes
<b>Design of the optical signal</b>		continous light
<b>Type of voltage</b> • of operating voltage		AC
<b>Operating voltage</b> • 1 / at 50 Hz / for AC / rated value • 1 / at 60 Hz / for AC / rated value	V V	230 230
<b>Reference code</b> • according to DIN EN 61346-2		P

**Mechanical design:**

<b>Mounting type</b>		Bayonet
<b>External diameter / of the signal column element</b>	mm	50

**Lamp:**




<b>Nature of fluorescent material</b>		LED
---------------------------------------	--	-----

**Ambient conditions:**

<b>Ambient temperature</b>		
----------------------------	--	--

• during operating	°C	-20 ... +50
<b>Protection class IP</b>		IP54
<b>Height</b>	mm	67
<b>Width</b>	mm	52

#### Certificates/approvals:

General Product Approval	Declaration of Conformity	Shipping Approval
	 EG-Konf.	 DNV

#### Further information:

##### Information- and Downloadcenter (Catalogs, Brochures,...)

<http://www.siemens.com/industrial-controls/catalogs>

##### Industry Mall (Online ordering system)

<http://www.siemens.com/industrial-controls/mall>

##### Cax online generator:

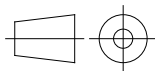
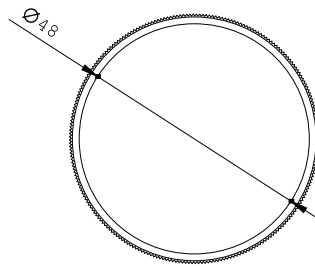
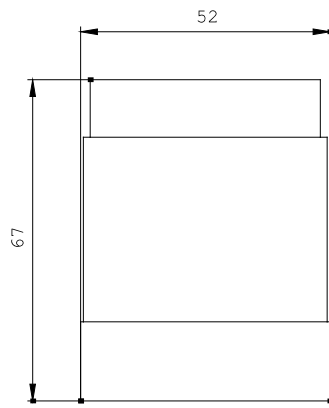
<http://www.siemens.com/cax>

##### Service&Support (Manuals, Certificates, Characteristics, FAQs,...)

<http://support.automation.siemens.com/WW/view/en/8WD4250-5AB/all>

##### Image database (product images, 2D dimension drawings, 3D models, device circuit diagrams, ...)

[http://www.automation.siemens.com/bilddb/cax\\_en.aspx?mlfb=8WD4250-5AB](http://www.automation.siemens.com/bilddb/cax_en.aspx?mlfb=8WD4250-5AB)



\W9.4444;  
\W6.8611; 8WD

last change:

Jun 16, 2014