

## BLZF 3.50/10/180 SN BK BX

**Weidmüller Interface GmbH & Co. KG**

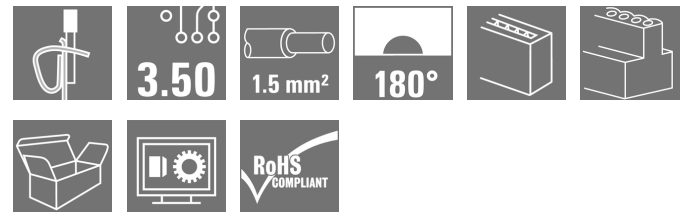
Klingenbergstraße 26

D-32758 Detmold

Germany

www.weidmueller.com

### Product image



Female connectors with tension clamp system for connecting cables in 3.50 pitch. They provide space for labelling and can be coded.

### General ordering data

|              |   |
|--------------|---|
| Version      | PCB plug-in connector, female plug, 3.50 mm, Number of poles: 10, 180°, Tension-clamp connection, Clamping range, max.: 1.5 mm <sup>2</sup> , Box |
| Order No.    | <a href="#">1690500099</a>  |
| Type         | BLZF 3.50/10/180 SN BK BX   |
| GTIN (EAN)   | 4032248893379   |
| Qty.         | 50 pc(s).   |
| Product data | IEC: 320 V / 14.5 A / 0.2 - 1.5 mm <sup>2</sup><br>UL: 300 V / 10 A / AWG 26 - AWG 14   |
| Packaging    | Box   |

Creation date March 24, 2021 8:06:14 PM CET

**BLZF 3.50/10/180 SN BK BX****Weidmüller Interface GmbH & Co. KG**

Klingenbergstraße 26

D-32758 Detmold

Germany

www.weidmueller.com

**Technical data****Dimensions and weights**

|                |            |                 |            |
|----------------|------------|-----------------|------------|
| Depth          | 22 mm      | Depth (inches)  | 0.866 inch |
| Height         | 13 mm      | Height (inches) | 0.512 inch |
| Net weight     | 10.1 g     | Width           | 35 mm      |
| Width (inches) | 1.378 inch |                 |            |

**System Parameters**

|  |                                     |  |                     |
|--|-------------------------------------|--|---------------------|
| Product family                               | OMNIMATE Signal - series BL/SL 3.50 | Type of connection                         | Field connection    |
| Wire connection method                       | Tension-clamp connection            | Pitch in mm (P)                            | 3.5 mm              |
| Pitch in inches (P)                          | 0.138 inch                          | Conductor outlet direction                 | 180°                |
| Number of poles                              | 10                                  | L1 in mm                                   | 31.5 mm             |
| L1 in inches                                 | 1.24 inch                           | Number of rows                             | 1                   |
| Pin series quantity                          | 1                                   | Rated cross-section                        | 1.5 mm <sup>2</sup> |
| Touch-safe protection acc. to DIN VDE 57 106 | Safe from finger touch              | Touch-safe protection acc. to DIN VDE 0470 | IP 20               |
| Volume resistance                            | ≤5 mΩ                               | Can be coded                               | Yes                 |
| Stripping length                             | 10 mm                               | Screwdriver blade                          | 0.4 x 2.5           |
| Screwdriver blade standard                   | DIN 5264-A                          | Plugging cycles                            | 25                  |
| Plugging force/pole, max.                    | 7 N                                 | Pulling force/pole, max.                   | 5 N                 |

**Material data**

|                                       |                            |                                       |        |
|---------------------------------------|----------------------------|---------------------------------------|--------|
| Insulating material                   | PBT                        | Colour                                | black  |
| Colour chart (similar)                | RAL 9011                   | Insulating material group             | IIIa   |
| Comparative Tracking Index (CTI)      | ≥ 200                      | UL 94 flammability rating             | V-0    |
| Contact material                      | Copper alloy               | Contact surface                       | tinned |
| Layer structure of plug contact       | 4...8 μm Sn hot-dip tinned | Storage temperature, min.             | -40 °C |
| Storage temperature, max.             | 70 °C                      | Operating temperature, min.           | -50 °C |
| Operating temperature, max.           | 100 °C                     | Temperature range, installation, min. | -30 °C |
| Temperature range, installation, max. | 100 °C                     |                                       |        |

**Conductors suitable for connection**

|   |                      |
|---|----------------------|
| Clamping range, min.  | 0.13 mm <sup>2</sup> |
| Clamping range, max.  | 1.5 mm <sup>2</sup>  |
| Wire connection cross section AWG, min.                             | AWG 28               |
| Wire connection cross section AWG, max.                             | AWG 16               |
| Solid, min. H05(07) V-U   | 0.2 mm <sup>2</sup>  |
| Solid, max. H05(07) V-U   | 1.5 mm <sup>2</sup>  |
| Flexible, min. H05(07) V-K  | 0.2 mm <sup>2</sup>  |
| Flexible, max. H05(07) V-K  | 1.5 mm <sup>2</sup>  |
| w. plastic collar ferrule, DIN 46228 pt 4, 0.2 mm <sup>2</sup> min. |                      |
| w. plastic collar ferrule, DIN 46228 pt 4, 1 mm <sup>2</sup> max.   |                      |
| w. wire end ferrule, DIN 46228 pt 1, min.                           | 0.2 mm <sup>2</sup>  |
| w. wire end ferrule, DIN 46228 pt 1, max.                           | 1.5 mm <sup>2</sup>  |
| Outer diameter of insulation, max.                                  | 2.9 mm               |
| Plug gauge in accordance with EN 60999 a x b; ø                     | 2.4 mm x 1.5 mm      |

Creation date March 24, 2021 8:06:14 PM CET

## BLZF 3.50/10/180 SN BK BX

Weidmüller Interface GmbH &amp; Co. KG

Klingenbergstraße 26

D-32758 Detmold

Germany

www.weidmueller.com

## Technical data

|  |  |                              |                            |       |
|--|--|------------------------------|----------------------------|-------|
| Clampable conductor                    | Cross-section for conductor connection | Type                         | fine-wired                 |       |
|  |  | nominal                      | 0.5 mm <sup>2</sup>        |       |
|  | wire end ferrule                       | Stripping length             | nominal                    | 12 mm |
|  |  | Recommended wire-end ferrule | <a href="#">H0.5/16 OR</a> |       |
|  |  | Stripping length             | nominal                    | 10 mm |
|  |  | Recommended wire-end ferrule | <a href="#">H0.5/10</a>    |       |
|  | Cross-section for conductor connection | Type                         | fine-wired                 |       |
|  |  | nominal                      | 0.75 mm <sup>2</sup>       |       |
|  | wire end ferrule                       | Stripping length             | nominal                    | 12 mm |
|  |  | Recommended wire-end ferrule | <a href="#">H0.75/16 W</a> |       |
|  |  | Stripping length             | nominal                    | 10 mm |
|  |  | Recommended wire-end ferrule | <a href="#">H0.75/10</a>   |       |
|  | Cross-section for conductor connection | Type                         | fine-wired                 |       |
|  |  | nominal                      | 1 mm <sup>2</sup>          |       |
|  | wire end ferrule                       | Stripping length             | nominal                    | 12 mm |
|  |  | Recommended wire-end ferrule | <a href="#">H1.0/16D R</a> |       |
| Stripping length                       |  | nominal                      | 10 mm                      |       |
| Recommended wire-end ferrule           |  | <a href="#">H1.0/10</a>      |                            |       |
| Cross-section for conductor connection | Type                                   | fine-wired                   |                            |       |
|  | nominal                                | 1.5 mm <sup>2</sup>          |                            |       |
| wire end ferrule                       | Stripping length                       | nominal                      | 10 mm                      |       |
|  | Recommended wire-end ferrule           | <a href="#">H1.5/10</a>      |                            |       |

## Reference text

The outside diameter of the plastic collar should not be larger than the pitch (P). Length of ferrules is to be chosen depending on the product and the rated voltage.

## Rated data acc. to IEC

|   |                        |   |                   |
|---|------------------------|---|-------------------|
| tested acc. to standard   | IEC 60664-1, IEC 61984 | Rated current, min. number of poles (Tu=20°C)                         | 14.5 A            |
| Rated current, max. number of poles (Tu=20°C)                             | 10 A                   | Rated current, min. number of poles (Tu=40°C)                         | 12 A              |
| Rated current, max. number of poles (Tu=40°C)                             | 8 A                    | Rated voltage for surge voltage class / pollution degree II/2         | 320 V             |
| Rated voltage for surge voltage class / pollution degree III/2            | 160 V                  | Rated voltage for surge voltage class / pollution degree III/3        | 160 V             |
| Rated impulse voltage for surge voltage class/ pollution degree II/2      | 2.5 kV                 | Rated impulse voltage for surge voltage class/ pollution degree III/2 | 2.5 kV            |
| Rated impulse voltage for surge voltage class/ contamination degree III/3 | 2.5 kV                 | Short-time withstand current resistance                               | 3 x 1s with 100 A |

## Rated data acc. to CSA

|                                   |        |                                   |        |
|-----------------------------------|--------|-----------------------------------|--------|
| Rated voltage (Use group B / CSA) | 300 V  | Rated voltage (Use group D / CSA) | 300 V  |
| Rated current (Use group B / CSA) | 10 A   | Rated current (Use group D / CSA) | 10 A   |
| Wire cross-section, AWG, min.     | AWG 26 | Wire cross-section, AWG, max.     | AWG 14 |

**BLZF 3.50/10/180 SN BK BX**
**Weidmüller Interface GmbH & Co. KG**

Klingenbergstraße 26

D-32758 Detmold

Germany

www.weidmueller.com

**Technical data**
**Rated data acc. to UL 1059**

Institute (UR)



Certificate No. (UR)

E60693

Rated voltage (Use group B / UL 1059) 300 V

Rated voltage (Use group D / UL 1059) 300 V

Rated current (Use group B / UL 1059) 10 A

Rated current (Use group D / UL 1059) 10 A

Wire cross-section, AWG, min. AWG 26

Wire cross-section, AWG, max. AWG 14

Reference to approval values

Specifications are maximum values, details - see approval certificate.

**Packing**

Packaging Box

VPE length 65 mm

VPE width 100 mm

VPE height 115 mm

**Type tests**

Test: Durability of markings

Standard

DIN EN 61984 section 7.3.2 / 09.02 taking pattern from DIN EN 60068-2-70 / 07.96

Test

mark of origin, type identification, rated voltage, rated cross-section, pitch, type of material, approval marking SEV, approval marking CSA

Evaluation

available

Test

approval marking UL

Evaluation

on packaging label

Test

durability

Evaluation

passed

Test: Clampable cross section

Standard

DIN EN 60999-1 section 7 and 9.1 / 12.00, DIN EN 60947-1 section 8.2.4.5.1 / 12.99

Conductor type

Type of conductor and conductor cross-section solid 0.2 mm<sup>2</sup>Type of conductor and conductor cross-section stranded 0.5 mm<sup>2</sup>Type of conductor and conductor cross-section solid 1.5 mm<sup>2</sup>Type of conductor and conductor cross-section stranded 1.5 mm<sup>2</sup>

Type of conductor and conductor cross-section AWG 28/1

Type of conductor and conductor cross-section AWG 28/19

Type of conductor and conductor cross-section AWG 16/1

Type of conductor and conductor cross-section AWG 16/19

Evaluation

passed

## BLZF 3.50/10/180 SN BK BX

**Weidmüller Interface GmbH & Co. KG**  
 Klingenbergstraße 26  
 D-32758 Detmold  
 Germany

www.weidmueller.com

## Technical data

Test for damage to and accidental loosening of conductors

|                |   |                              |
|----------------|---|------------------------------|
| Standard       | DIN EN 60999-1 section 9.4 / 12.00            |                              |
| Requirement    | 0.2 kg  |                              |
| Conductor type | Type of conductor and conductor cross-section | solid 0.2 mm <sup>2</sup>    |
|                | Type of conductor and conductor cross-section | AWG 28/1                     |
|                | Type of conductor and conductor cross-section | AWG 28/19                    |
| Evaluation     | passed  |                              |
| Requirement    | 0.3 kg  |                              |
| Conductor type | Type of conductor and conductor cross-section | stranded 0.5 mm <sup>2</sup> |
|                | Evaluation                                    | passed                       |
| Requirement    | 0.4 kg  |                              |
| Conductor type | Type of conductor and conductor cross-section | solid 1.5 mm <sup>2</sup>    |
|                | Type of conductor and conductor cross-section | stranded 1.5 mm <sup>2</sup> |
|                | Type of conductor and conductor cross-section | AWG 16/1                     |
|                | Type of conductor and conductor cross-section | AWG 16/19                    |
| Evaluation     | passed  |                              |

## BLZF 3.50/10/180 SN BK BX

Weidmüller Interface GmbH &amp; Co. KG

Klingenbergstraße 26

D-32758 Detmold

Germany

www.weidmueller.com

## Technical data

|               |                |   |           |  |
|---------------|----------------|---|-----------|--|
| Pull-out test | Standard       | DIN EN 60999-1 section 9.5 / 12.00            |           |  |
|               | Requirement    | ≥5 N  |           |  |
|               | Conductor type | Type of conductor and conductor cross-section | AWG 28/1  |  |
|               |                | Type of conductor and conductor cross-section | AWG 28/19 |  |
|               | Evaluation     | passed  |           |  |
|               | Requirement    | ≥10 N   |           |  |
|               | Conductor type | Type of conductor and conductor cross-section | H05V-U0.2 |  |
|               |                | Evaluation                                    | passed    |  |
|               | Requirement    | ≥20 N   |           |  |
|               | Conductor type | Type of conductor and conductor cross-section | H05V-U0.5 |  |
|               |                | Evaluation                                    | passed    |  |
|               | Requirement    | ≥40 N   |           |  |
|               | Conductor type | Type of conductor and conductor cross-section | H05V-U1.5 |  |
|               |                | Type of conductor and conductor cross-section | H05V-K1.5 |  |
|               |                | Type of conductor and conductor cross-section | AWG 16/1  |  |
|               |                | Type of conductor and conductor cross-section | AWG 16/19 |  |
| Evaluation    | passed         |   |           |  |

## Classifications

|             |             |             |             |
|-------------|-------------|-------------|-------------|
| ETIM 6.0    | EC002638    | ETIM 7.0    | EC002638    |
| ECLASS 9.0  | 27-44-03-09 | ECLASS 9.1  | 27-44-03-09 |
| ECLASS 10.0 | 27-44-03-09 | ECLASS 11.0 | 27-46-02-02 |

## Important note

|                |  |
|----------------|--|
| IPC conformity | Conformity: The products are developed, manufactured and delivered according international recognized standards and norms and comply with the assured properties in the data sheet resp. fulfill decorative properties in accordance with IPC-A-610 "Class 2". Further claims on the products can be evaluated on request. |
| Notes          | <ul style="list-style-type: none"> <li>Long term storage of the product with average temperature of 50 °C and average humidity 70%, 36 months</li> </ul>   |

## Approvals

Approvals



|                       |         |
|-----------------------|---------|
| ROHS                  | Conform |
| UL File Number Search | E60693  |

**Data sheet****BLZF 3.50/10/180 SN BK BX****Weidmüller Interface GmbH & Co. KG**  
Klingenbergstraße 26  
D-32758 Detmold  
Germany[www.weidmueller.com](http://www.weidmueller.com)**Technical data****Downloads**

|   |   |
|---|---|
| Approval/Certificate/Document of Conformity | <a href="#">Declaration of the Manufacturer</a> |
| Engineering Data                            | <a href="#">STEP</a>                            |
| Engineering Data                            | <a href="#">WSCAD</a>                           |

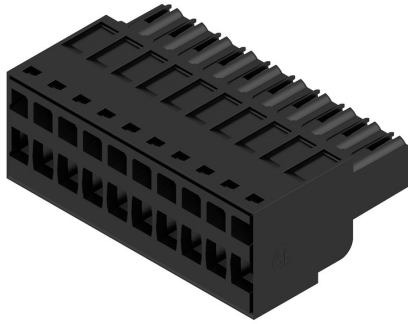
**BLZF 3.50/10/180 SN BK BX**

**Weidmüller Interface GmbH & Co. KG**  
 Klingenbergstraße 26  
 D-32758 Detmold  
 Germany

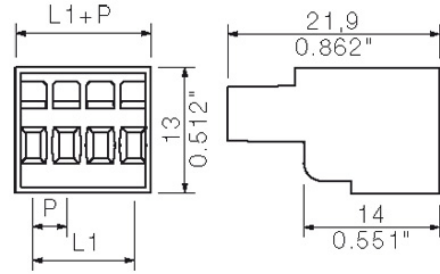
www.weidmueller.com

**Drawings**

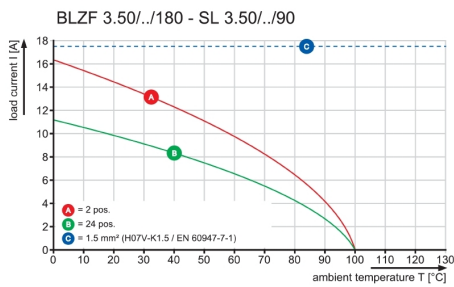
**Product image**



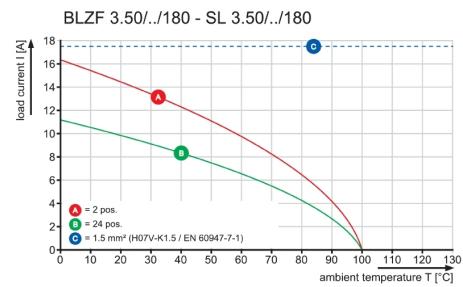
**Dimensional drawing**



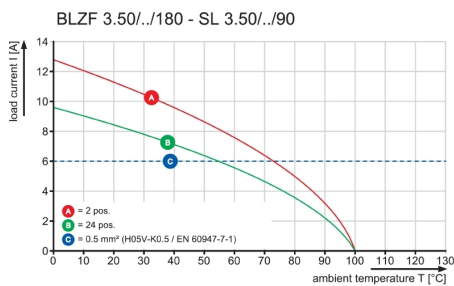
**Graph**



**Graph**



**Graph**



SHOWN:BLZF 3.50/04/180



SHOWN:BLZF 3.50/04/180F



SHOWN:BLZF 3.50/04/180/SO



SHOWN:BLZF 3.50/04/180LR REDESIGN



SHOWN:BLZF 3.50/04/180LR



SHOWN:BLZF 3.50/04/180LH



ALLGEMEINGUELTIGE KUNDENZEICHNUNG, AKTUELLER STAND NUR AUF ANFRAGE  
GENERAL CUSTOMER DRAWING, TOPICAL VERSION ONLY IF REQUIRED

For the mounting of PCBs, it should be noted that the rated data given in the catalogue relates only to the connection elements. The necessary creepage and clearance paths must be observed in connection with the respective applicant in accordance with VDE 0110. The current-carrying capacity and pitch tolerance is to be determined according to DIN IEC 326 part 3 very fine.

Weidmüller connectors are tested to the DIN VDE 0627 standard, and are valid for its field of application. Provided that the connectors are used to the intended purpose, all requirements with respect to the occurring of electrical, mechanical, thermic and corrosive stress will be satisfied.

| POLZAHL<br>POLES | L1<br>(mm) | L1<br>(inch) |
|------------------|------------|--------------|
| 24               | 80.5       | 3.169        |
| 23               | 77.0       | 3.032        |
| 22               | 73.5       | 2.894        |
| 21               | 70.0       | 2.756        |
| 20               | 66.5       | 2.618        |
| 19               | 63.0       | 2.480        |
| 18               | 59.5       | 2.343        |
| 17               | 56.0       | 2.205        |
| 16               | 52.5       | 2.067        |
| 15               | 49.0       | 1.929        |
| 14               | 45.5       | 1.791        |
| 13               | 42.0       | 1.654        |
| 12               | 38.5       | 1.516        |
| 11               | 35.0       | 1.378        |
| 10               | 31.5       | 1.240        |
| 9                | 28.0       | 1.102        |
| 8                | 24.5       | 0.965        |
| 7                | 21.0       | 0.827        |
| 6                | 17.5       | 0.689        |
| 5                | 14.0       | 0.551        |
| 4                | 10.5       | 0.413        |
| 3                | 7.0        | 0.276        |
| 2                | 3.5        | 0.138        |

|               |  |   |  |
|---------------|--|---|--|
|               | DIN ISO 2768-m   | Cat.no.: .  |  |
|               | 93783/5<br>24.11.17 HELIS_MA 02  |   |  |
| Modification  |  | <b>3 23142</b>  |  |
|               |  | Drawing no. <b>3 23142</b> Issue no. <b>20</b><br>Sheet 01 of 01 sheets |  |
| Scale: 2/1    | Drawn 10.12.2007 HELIS_MA<br>Responsible AMANN_A<br>Checked 08.01.2018 HELIS_MA<br>Approved LANG_T | <b>BLZF 3.50/././180..</b><br>BUCHSENSTECKER<br>FEMALE PLUG             |  |
| Supersedes: . | Product file: BLZF 3.50  | 7357  |  |