

ACT20P-VM-AO-S**Weidmüller Interface GmbH & Co. KG**

Klingenbergstraße 26

D-32758 Detmold

Germany

www.weidmueller.com

Product image**ACT20P: The flexible solution**

- Precise and highly functional signal converters
- Release levers simplify handling

General ordering data

Version	Signal converter/insulator, Input: AC/DC voltage, Output: 4 - 20 mA
Order No.	7760054306
Type	ACT20P-VM-AO-S
GTIN (EAN)	6944 169749087
Qty.	1 pc(s).

Creation date March 29, 2021 8:41:33 PM CEST

Catalogue status 12.03.2021 / We reserve the right to make technical changes.

ACT20P-VM-AO-S**Weidmüller Interface GmbH & Co. KG**

Klingenbergstraße 26

D-32758 Detmold

Germany

www.weidmueller.com

Technical data**Dimensions and weights**

Depth	114.3 mm	Depth (inches)	4.5 inch
Height	119.2 mm	Height (inches)	4.693 inch
Net weight	110 g	Width	22.5 mm
Width (inches)	0.886 inch		

Temperatures

Storage temperature	-40 °C...85 °C	Operating temperature	-25 °C...65 °C
Humidity	5...95 %, no condensation		

Probability of failure

MTTF	140 Years
------	-----------

Environmental Product Compliance

REACH SVHC	Lead 7439-92-1
------------	----------------

Input

Input resistance	1 MΩ±5%	Input signal	U _{DC} , U _{AC} Effective value (sinusoidal only) 40-60 Hz
Input voltage	0...30 V DC, 0...60 V DC, 0...150 V DC, 0...300 V DC, 0...440 V DC, 0...660 V DC, 0...60 V AC, 0...144 V AC, 0...300 V AC, 0...440 V AC, configurable	Number of inputs	1

Output

Load impedance current	≤ 500 Ω	Number of outputs	1
Output current	0...20 mA, 4...20 mA	Output voltage, note	0...10 V
load impedance voltage	≥ 10 kΩ		

General data

Accuracy	0.5 % FSR	Configuration	With FDT/DTM software
Galvanic isolation	3-way isolator, between input / output / supply	Power consumption	≤ 100 mA @ 24 VDC, ≤ 120mA @ 24V AC
Rail	TS 35	Step response time	< 300 ms
Temperature coefficient	≤ 200 ppm/K	Type of connection	Screw connection
Voltage supply	24...240 VUC (±10%)		

ACT20P-VM-AO-S**Weidmüller Interface GmbH & Co. KG**

Klingenbergstraße 26

D-32758 Detmold

Germany

www.weidmueller.com

Technical data**Insulation coordination**

EMC standards	IEC 61000-6 /-2, IEC 61000-6-4, IEC 61326-1	Galvanic isolation	3-way isolator, between input / output / supply
Impulse withstand voltage	4 kV (1.2/50 µs) input - output, 4 kV (1.2/50 µs) input / supply, 2.5 kV (1.2/50 µs) output / supply	Insulation voltage	1.5 kV AC output / supply, 2 kV AC input / output, 2 kV AC input / supply
Pollution severity	2	Rated voltage	600 V input / output, 600 V input / supply, 300 V output / supply
Surge voltage category	III		

Connection data

Type of connection	Screw connection	Tightening torque, min.	0.4 Nm
Tightening torque, max.	0.6 Nm	Clamping range, rated connection	1.5 mm ²
Clamping range, min.	0.5 mm ²	Clamping range, max.	2.5 mm ²
Wire connection cross section AWG, min.	AWG 26	Wire connection cross section AWG, max.	AWG 12

Classifications

ETIM 6.0	EC002653	ETIM 7.0	EC002653
ECLASS 9.0	27-21-01-20	ECLASS 9.1	27-21-01-20
ECLASS 10.0	27-21-01-20	ECLASS 11.0	27-21-01-20

Important note

Product information	<p>The analogue voltage converter ACT20P-VM-AO-S measures DC or AC voltages. The analogue input signal is linearly converted into an analogue output signal (current or voltage) and galvanically isolated.</p> <p>Features</p> <ul style="list-style-type: none"> • Configuration and monitoring are performed via FDT/DTM-Software „WI-Manager“. • Signal and alarm triggering upon exceeding limit values or reverse polarity DC input voltage • Front LED indicates operation status • 3-way galvanic isolation between input, output and power supply.
---------------------	---

Approvals

Approvals



ROHS	Conform
UL File Number Search	E469563

Downloads

Approval/Certificate/Document of Conformity	UL certificate Declaration of Conformity
Engineering Data	STEP
Software	WI-Manager, DTM-Library for online installation V.1.2.2
User Documentation	Instruction sheet

Creation date March 29, 2021 8:41:33 PM CEST

Catalogue status 12.03.2021 / We reserve the right to make technical changes.

3

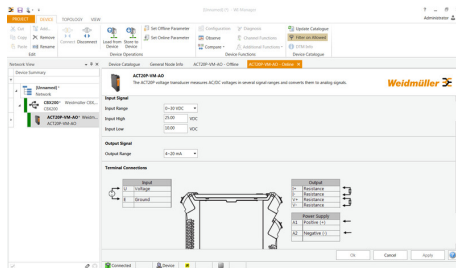
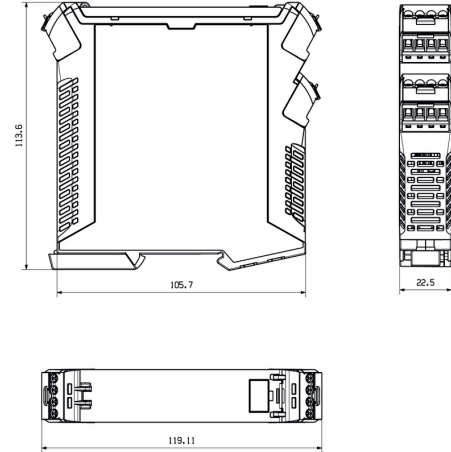
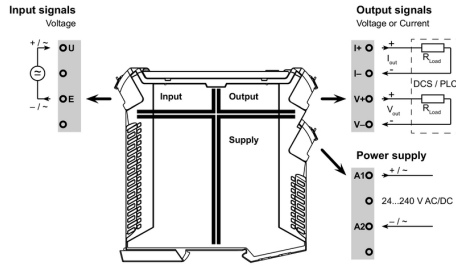
ACT20P-VM-AO-S

Weidmüller Interface GmbH & Co. KG
 Klingenbergstraße 26
 D-32758 Detmold
 Germany

www.weidmueller.com

Drawings

Dimensioned drawing



screenshot of configuration with FDT2 / DTM software