

**SAIL-VSBD-M12W-1.5U****Weidmüller Interface GmbH & Co. KG**

Klingenbergstraße 26

D-32758 Detmold

Germany

www.weidmueller.com



Weidmüller can supply valve plugs as connecting lines with M12 plugs and one end without connector. The status of the valve plug is shown by an LED. Every valve plug is fitted with a protective circuit. The Weidmüller range includes valve plugs of type A, B and C to DIN and industry standards. In the plugged condition they achieve IP 67 class of protection. The outlet direction is also a decisive factor: Weidmüller can also supply 0° versions, i.e. the cable outlet direction is located at the PE contact.

**General ordering data**

Version	Valve plug, 90°; plug - valve plug, BD
Order No.	<a href="#">1857710150</a>
Type	SAIL-VSBD-M12W-1.5U
GTIN (EAN)	4032248404025
Qty.	1 pc(s).

Creation date March 25, 2021 8:56:05 PM CET

Catalogue status 12.03.2021 / We reserve the right to make technical changes.

## SAIL-VSBD-M12W-1.5U

**Weidmüller Interface GmbH & Co. KG**

Klingenbergstraße 26

D-32758 Detmold

Germany

www.weidmueller.com

## Technical data

### Dimensions and weights

Net weight 114 g

### Environmental Product Compliance

REACH SVHC Lead 7439-92-1

### Technical specifications for cable

Acceleration	5 m/s <sup>2</sup>	
Bending cycles	2 Mio	
Bending radius, min., moving	10 x cable diameter	
Bending radius, min., stationary	5 x cable diameter	
Cable length	1.5 m	
Colour coding	brown, blue, Green/yellow	
Core cross-section	0.5 mm <sup>2</sup>	
Halogen	No	
Insulation	PP	
Number of poles	3	
Number of poles	3	
Outer diameter	4.6 ± 0.2 mm	
Outside diameter	Diameter	4.6 mm
	Signs	±
	Tolerance	0.2 mm
Outside diameter	4.6 mm ± 0.2 mm	
Resistant to welding beads	No	
Sheath material	PUR	
Sheathing colour	black	
Shielded	No	
Speed	200 m/min	
Suitable for cable carriers	Yes	
Temperature range, moving	-25...80 °C	
Temperature range, moving, max.	80 °C	
Temperature range, moving, min.	-25 °C	
Temperature range, stationary	-50...80 °C	
Temperature range, stationary, max.	80 °C	
Temperature range, stationary, min.	-50 °C	
Torsion resistance	0 °/m	

### General technical data

All valve plugs are fitted with protective circuits	Zener diode	Coding	DIN design B (10 mm), M12 = A
Connection thread	Miscellaneous	Contact surface	tinned
LED	Yes	Protection degree	IP67, when screwed in
Rated current	4 A	Rated voltage	24 V
Temperature range of housing	-25...+80 °C	Tightening torque	Mounting screw M3: 0.4 Nm, M12: 0.8 - 1.2 Nm
Version	90°; plug - valve plug		

### Classifications

ETIM 6.0	EC001855	ETIM 7.0	EC001855
ECLASS 9.0	27-06-03-12	ECLASS 9.1	27-06-03-11
ECLASS 10.0	27-06-03-12	ECLASS 11.0	27-06-03-12

Creation date March 25, 2021 8:56:05 PM CET

Catalogue status 12.03.2021 / We reserve the right to make technical changes.

**Data sheet**

**SAIL-VSBD-M12W-1.5U**

**Weidmüller Interface GmbH & Co. KG**  
Klingenbergstraße 26  
D-32758 Detmold  
Germany

[www.weidmueller.com](http://www.weidmueller.com)

**Technical data**

**Approvals**

Approvals



ROHS

Conform

**Data sheet**

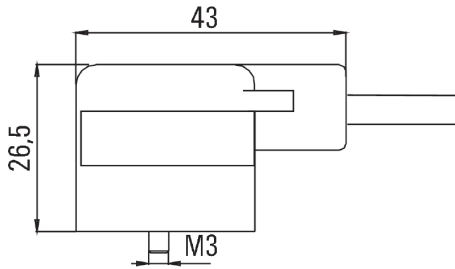
**SAIL-VSBD-M12W-1.5U**

**Weidmüller Interface GmbH & Co. KG**  
 Klingenbergstraße 26  
 D-32758 Detmold  
 Germany

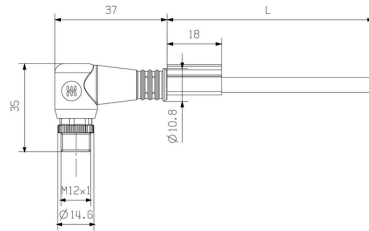
www.weidmueller.com

**Drawings**

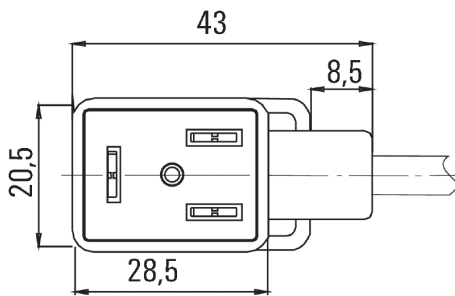
**Dimensioned drawing**



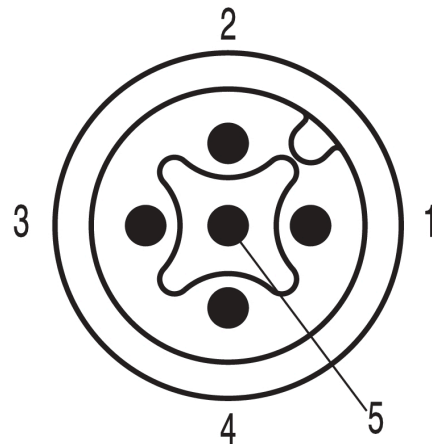
**Dimensioned drawing**



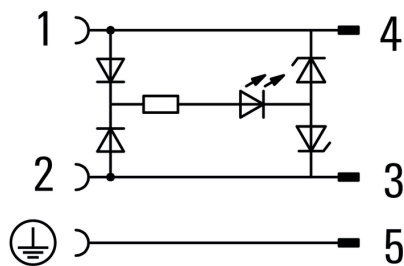
**Pole scheme**



**Pole scheme**



**Wiring diagram**



**24V<sub>AC/DC</sub> \_4A**