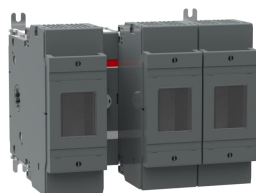


PRODUCT-DETAILS

# OS250D12BB

## OS250D12BB SPECIAL CONNECTED SWITCH FUSE



### General Information

Extended Product Type	OS250D12BB
Product ID	1SCA102202R1001
EAN	6417019369822
Catalog Description	OS250D12BB SPECIAL CONNECTED SWITCH FUSE
Long Description	Switch Fuses,Front Operated,3-pole,12 (Between the Poles),DIN,0,1,Handle and shaft not included,

### Ordering

Customs Tariff Number	85365080
Country of Origin	Finland (FI)

### Popular Downloads

Data Sheet, Technical Information	1SCC311120D0201
Instructions and Manuals	1SCC311019M0002

### Dimensions

Product Net Width	206 mm
Product Net Height	193 mm

Product Net Depth / Length	189 mm
Product Net Weight	3.03 kg 6.68 lb

## Technical

Rated Operational Current AC-21A ( $I_e$ )	(500 V) 250 A (690 V) 250 A
Rated Operational Current AC-22A ( $I_e$ )	(380 ... 415 V) 250 A (500 V) 250 A (690 V) 250 A
Rated Operational Current AC-23A ( $I_e$ )	(380 ... 415 V) 250 A (500 V) 250 A (690 V) 250 A
Rated Operational Power AC-23A ( $P_e$ )	(220 ... 240 V) 75 kW (400 V) 140 kW (415 V) 145 kW (500 V) 170 kW (690 V) 250 kW
Conventional Free-air Thermal Current ( $I_{th}$ )	q = 40 °C 250 A
Conventional Thermal Current ( $I_{the}$ )	Fully Enclosed 250 A
Rated Impulse Withstand Voltage ( $U_{imp}$ )	12 kV
Rated Insulation Voltage ( $U_i$ )	1000 V
Rated Operational Voltage	500 V
Rated Short-time Withstand Current ( $I_{cw}$ )	for 1 s 8 kiloampere rms
Rated Conditional Short-Circuit Current ( $I_{nc}$ )	(690 V) 80 kA
Power Loss	at Rated Operating Conditions per Pole 23 W
Pollution Degree	3
Handle Type	Handle and shaft not included
Switches Operating Mechanism	12 (Between the Poles)
Position of Line Terminals	Back In - Back Out
Fuse Size	0,1
Fuse System	DIN
Operating Mode	Front Operated
Standards	IEC 60947-3
Mounting Type	Base mounting
Number of Poles	3
Terminal Type	Lug terminals
Terminal Width	25 mm
Tightening Torque	30 ... 44 N·m
Fuse Type	DIN

## Environmental

RoHS Status	Following EU Directive 2011/65/EU and Amendment 2015/863 July 22, 2019
-------------	--

## Certificates and Declarations (Document Number)

Declaration of	1SCC311120D2702
----------------	-----------------

## Conformity - CE

EAC Certificate	EAC OT_OTDC_OTL_OTP_OTR_OTU_OTE_OETL_OESA_OESC_OTM_OS_OSM_p f
Instructions and Manuals	1SCC311019M0002
RoHS Information	1SCC311120D2702

## Container Information

Package Level 1 Units	box 1 piece
Package Level 1 Width	328 mm 12.91 in
Package Level 1 Depth / Length	365 mm 14.37 in
Package Level 1 Height	260 mm 10.24 in
Package Level 1 Gross Weight	3.93 kg 8.66 lb
Package Level 1 EAN	6417019369822

## Classifications

Object Classification Code	Q
ETIM 4	EC001040 - Fuse switch disconnecter
ETIM 5	EC001040 - Fuse switch disconnecter
ETIM 6	EC001040 - Fuse switch disconnecter
ETIM 7	EC001040 - Fuse switch disconnecter
WEEE Category	5. Small Equipment (No External Dimension More Than 50 cm)

## Categories

Low Voltage Products and Systems → Switches → Switch Fuses

