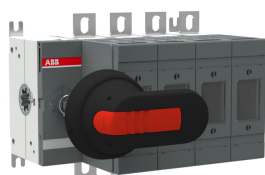


PRODUCT-DETAILS

OS125GD04N1P

OS125GD04N1P SWITCH FUSE



General Information

Extended Product Type	OS125GD04N1P
Product ID	1SCA117419R1001
EAN	6417019493671
Catalog Description	OS125GD04N1P SWITCH FUSE
Long Description	Switch Fuses,Front Operated,4-pole,04 (Left Side),DIN,000,00,Handle and shaft included,Switched - With Solid Link

Ordering

Customs Tariff Number	85365080
Country of Origin	Finland (FI)

Popular Downloads

Data Sheet, Technical Information	1SCC311137D2703
Instructions and Manuals	1SCC110037M0206

Dimensions

Product Net Width	182 mm
Product Net Height	112 mm

Product Net Depth / Length	130 mm
Product Net Weight	2.6 kg 5.73 lb

Technical

Rated Operational Current AC-21A (I_e)	(500 V) 125 A (690 V) 125 A
Rated Operational Current AC-22A (I_e)	(500 V) 125 A (690 V) 125 A
Rated Operational Current AC-23A (I_e)	(500 V) 125 A (690 V) 125 A
Rated Operational Power AC-23A (P_e)	(220 ... 240 V) 37 kW (400 V) 55 kW (415 V) 55 kW (500 V) 75 kW (690 V) 110 kW
Conventional Free-air Thermal Current (I_{th})	q = 40 °C 125 A
Conventional Thermal Current (I_{the})	Fully Enclosed 125 A
Rated Impulse Withstand Voltage (U_{imp})	8 kV
Rated Insulation Voltage (U_i)	1000 V
Rated Operational Voltage	500 V
Rated Short-time Withstand Current (I_{cw})	for 1 s 5 kiloampere rms
Rated Conditional Short-Circuit Current (I_{nc})	(690 V) 80 kA
Power Loss	at Rated Operating Conditions per Pole 12 W
Pollution Degree	3
Handle Type	Pistol handle and shaft included
Fourth Pole Position	Left Side
Fourth Pole Type	Switched - With Solid Link
Switches Operating Mechanism	04 (Left Side)
Position of Line Terminals	Top In - Bottom Out, Bottom In - Top Out
Fuse Size	000,00
Fuse System	DIN
Operating Mode	Front Operated
Standards	IEC 60947-3
Mounting Type	Base mounting
Number of Poles	4
Terminal Type	Lug terminals
Terminal Width	20 mm
Tightening Torque	15 ... 22 N·m
Fuse Type	DIN

Environmental

RoHS Status	Following EU Directive 2011/65/EU and Amendment 2015/863 July 22, 2019
-------------	--

Certificates and Declarations (Document Number)

CCC Certificate

CCC OS100-160G_2015.pdf

Declaration of Conformity - CE	1SCC311137D2703
DNV GL Certificate	1SCC311125D0203
EAC Certificate	EAC OT_OTDC_OTL_OTP_OTR_OTU_OTE_OETL_OESA_OESC_OTM_OS_OSM_.pdf
Instructions and Manuals	1SCC110037M0206
RoHS Information	1SCC311137D2703

Container Information

Package Level 1 Units	box 1 piece
Package Level 1 Width	170 mm 6.7 in
Package Level 1 Depth / Length	250 mm 9.8 in
Package Level 1 Height	155 mm 6.1 in
Package Level 1 Gross Weight	2.76 kg 6.1 lb
Package Level 1 EAN	6417019493671

Classifications

Object Classification Code	Q
ETIM 4	EC001040 - Fuse switch disconnecter
ETIM 5	EC001040 - Fuse switch disconnecter
ETIM 6	EC001040 - Fuse switch disconnecter
ETIM 7	EC001040 - Fuse switch disconnecter
WEEE Category	5. Small Equipment (No External Dimension More Than 50 cm)

Categories

Low Voltage Products and Systems → Switches → Switch Fuses

